

N0253

INSTALLATION INSTRUCTIONS



PASSION FOR THE DARTS



WORKER

F10555



AK
HOMME

X.S.W

ML3D

AK-BLASTER MOD SHOP IS AN ONLINE SHOP AND WE MAKE PRODUCTS TO MODIFY AND CUSTOMIZE NERF BLASTER. WE OFFER WORKER MOD, F10555, MEN-GUN MOD, AK TACTICAL GEAR.XSW.ML3D, ARTIFACT, ETC BRAND PRODUCTS ON BLASTER MODDING. WE PROVIDE SERVICES ON CUSTOMIZE BLASTER WITH PARTS, 3D PRINTING AND PAINT WORKS. WE ORGANIZE BLASTER GAME ACTIVITIES AND NERF PARTY FOR KIDS. WE OFFER VENUE DESIGN, CUSTOMIZE INVITATION CARDS, HEALTHY FOODS AND CAKE, ORGANIZE NERF BATTLE GAME AND PHOTOGRAPHY SERVICES.

Disclaimer

Disclaimer:

Individual results may vary. Modding blasters is a hobby of ours, and in no way do we claim to be experts on the subject. We've written this manual for other enthusiasts who want to accomplish what we have with our blasters. However, due to legal reasons, we're unable to guarantee any results and the content in this manual should not be considered professional advice.

The use of this information and recommended products should be based on your own due diligence. You agree not to hold the authors and/or distributors of this manual liable for any success or failure of your endeavors that are directly or indirectly related to the purchase and use of our information, recommended products and services.



Make sure you have good knowledge on electric circuit and modding skill. Please read below instruction carefully and reference to online video on installing instruction.

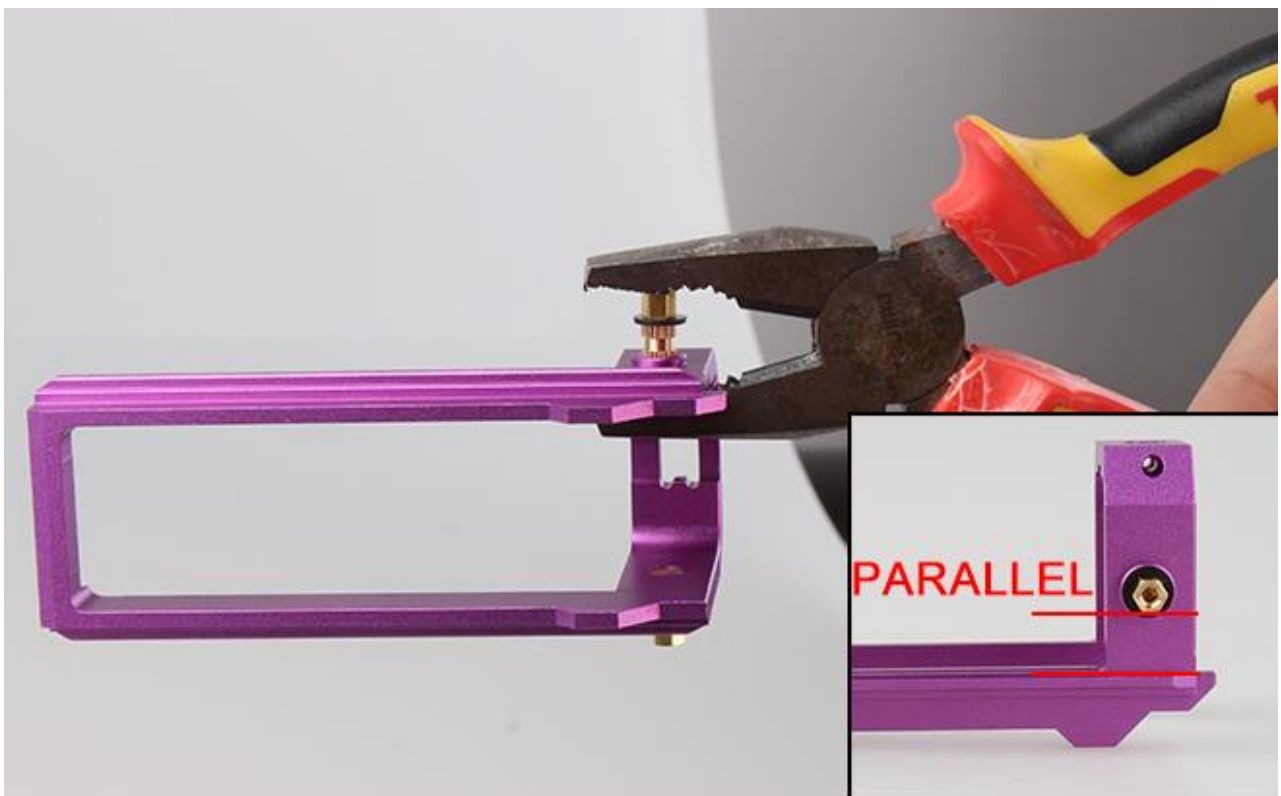
INSTALLATION STEPS

Supplies Needed:

- Small Phillips Head Screwdriver
- Small Flat Head Screwdriver
- pliers

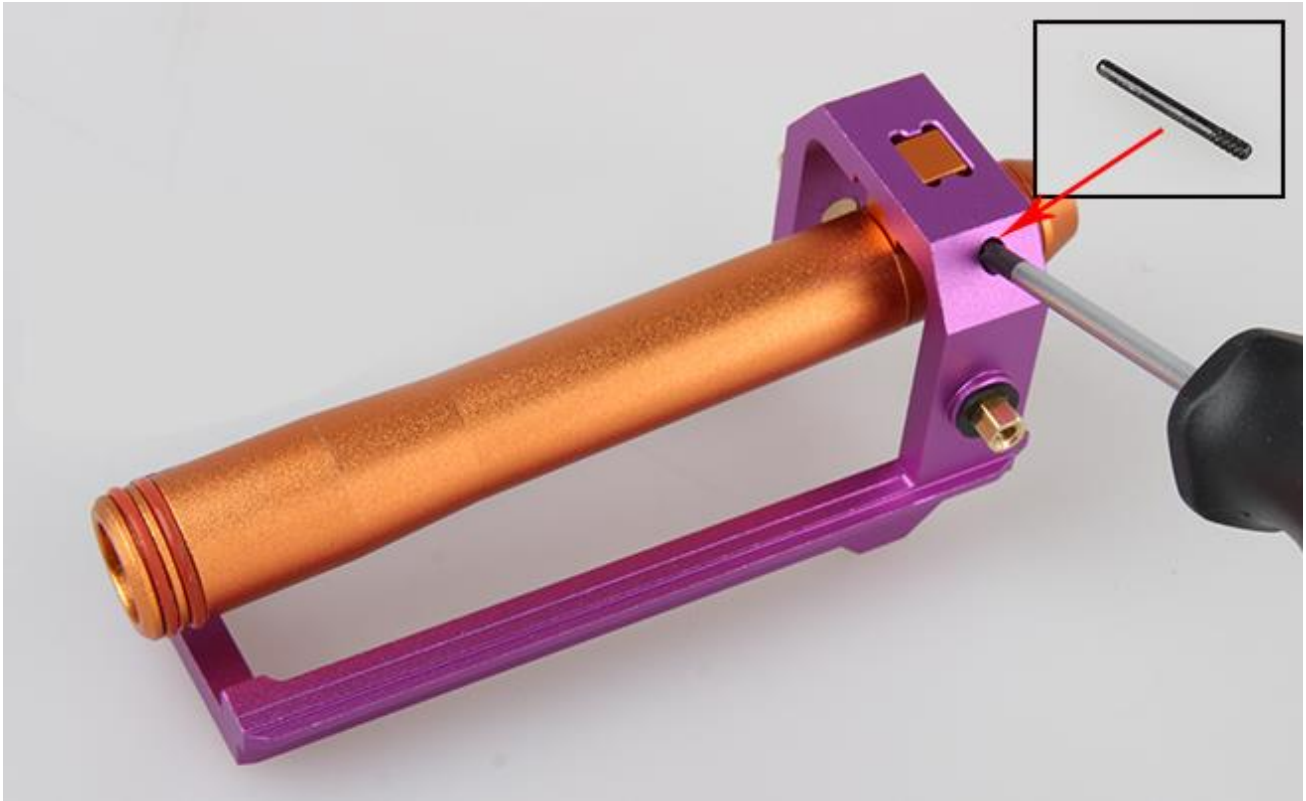
Step 1:

Insert the brass column into the bolt shed side connector hold, press with tool and ensure the hexagon flat bottom parallel to the bolt shed slider.



Step 2:

Install the dart catcher into the bolt shed, insert the metal rod to secure the dart catcher in position.



Step 3:

Install the remain plunger tube, pump and catch back to the blaster body.



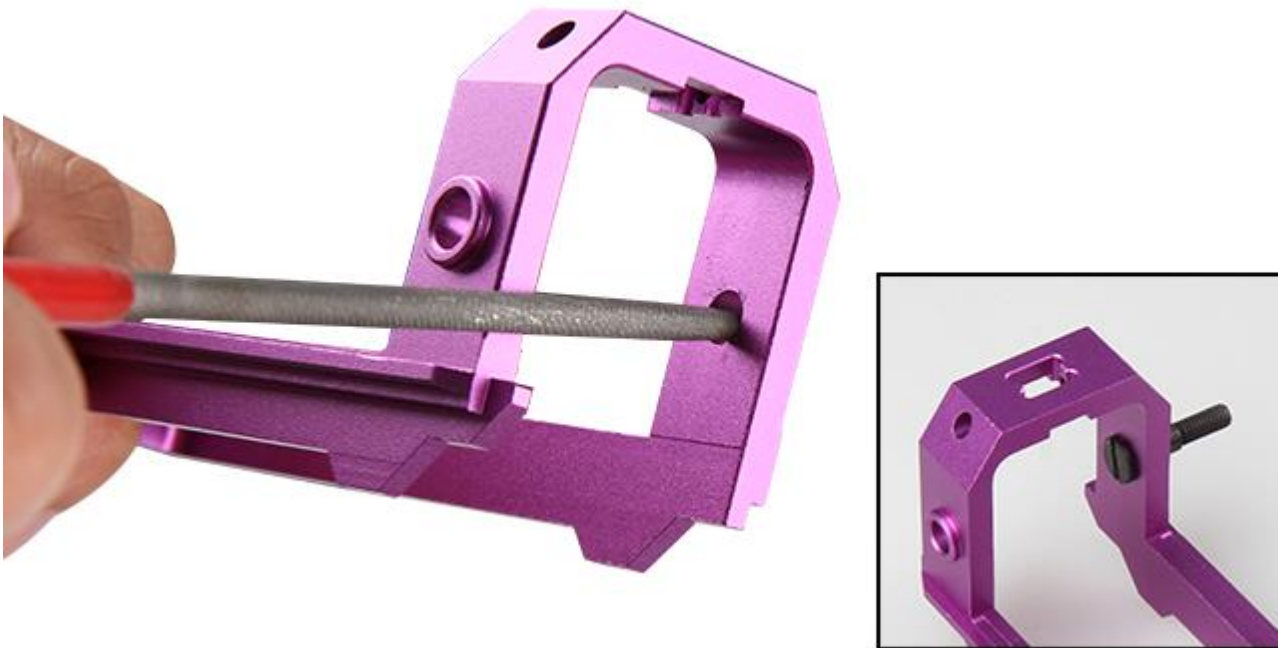
Step 4:

Cover the blaster halves and secure with screws, install the pump grip kit to the bolt shed, fasten the screw with the pump rod end to the bolt brass connector, make sure smooth sliding against the connector with the blaster tunnel.

**Step 5:**

For horizontal grip installation, make sure you are right or left hander, insert the screw from inside and expose the thread outside the bolt shed.

A bit filing does need on the bolt shed connector hold to ensure the screw insert and secure in position.



Step 6:

Install the remain plunger tube, pump and catch back to the blaster body. Install the sniper grip onto the screw connecting with the bolt shed and check smooth sliding against the blaster side tunnel.

