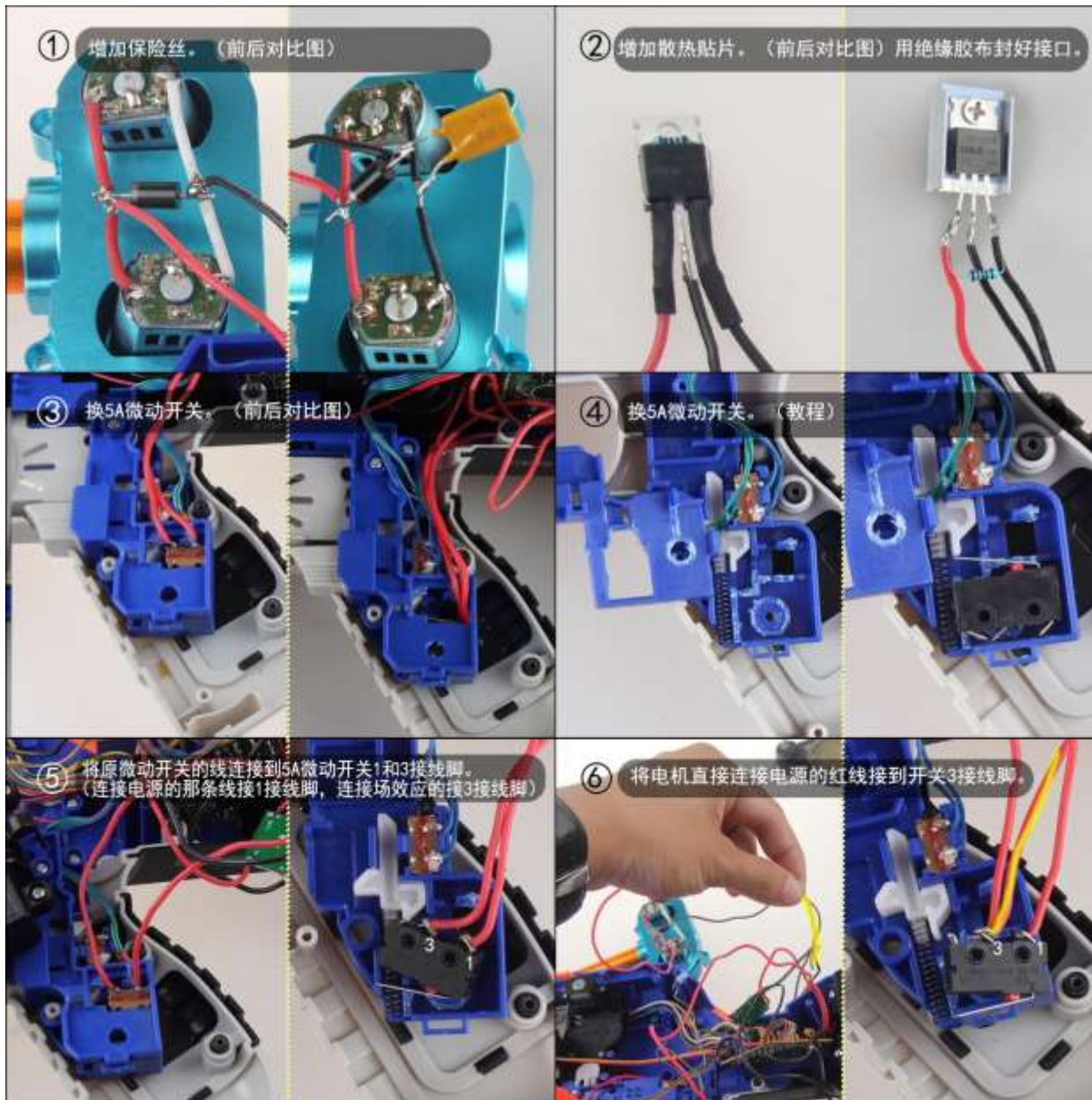


1) Connect the motors as shown diagram, solder the diode and fuse connecting to the main circuit.



3) Locate the original switch built inside the grip.

5) Connect the switch and MOFSET, circuit diagram as below.

2) Connect the MOFSET and resistor as shown image, screw the MOFSET on the heat sink and insulate the wire well.

4) replace the 5A switch as given in the kit, trim the compartment to fit the switch.

6) Connect the power wire to the switch, circuit diagram as below.

7) Put all the switch and wires in correct location.



8) cover the shell and fasten all screws back to the blaster.

Circuit Diagram

