

KRISS VECTOR



PASSION FOR THE DARTS



WORKER

F10555



**AK
HOMME**

X.S.W

ML3D

AK-BLASTER MOD SHOP IS AN ONLINE SHOP AND WE MAKE PRODUCTS TO MODIFY AND CUSTOMIZE NERF BLASTER. WE OFFER WORKER MOD, F10555, MEN-GUN MOD, AK TACTICAL GEAR.XSW.ML3D, ARTIFACT, ETC BRAND PRODUCTS ON BLASTER MODDING. WE PROVIDE SERVICES ON CUSTOMIZE BLASTER WITH PARTS, 3D PRINTING AND PAINT WORKS. WE ORGANIZE BLASTER GAME ACTIVITIES AND NERF PARTY FOR KIDS. WE OFFER VENUE DESIGN, CUSTOMIZE INVITATION CARDS, HEALTHY FOODS AND CAKE, ORGANIZE NERF BATTLE GAME AND PHOTOGRAPHY SERVICES.

Disclaimer

Disclaimer:

Individual results may vary. Modding blasters is a hobby of ours, and in no way do we claim to be experts on the subject. We've written this manual for other enthusiasts who want to accomplish what we have with our blasters. However, due to legal reasons, we're unable to guarantee any results and the content in this manual should not be considered professional advice.

The use of this information and recommended products should be based on your own due diligence. You agree not to hold the authors and/or distributors of this manual liable for any success or failure of your endeavors that are directly or indirectly related to the purchase and use of our information, recommended products and services.



Make sure you have good knowledge on electric circuit and modding skill. Please read below instruction carefully and reference to online video on installing instruction.

INSTALLATION STEPS

Supplies Needed:

- Small Phillips Head Screwdriver
- Small Flat Head Screwdriver

Step 1:

Remove all the screws on the body as well as battery housing.



Step 2:

Disassemble the body, be aware damaging the black wire while separating the halves.

**Step 3:**

Using clip tool remove the metal plate inside battery housing.



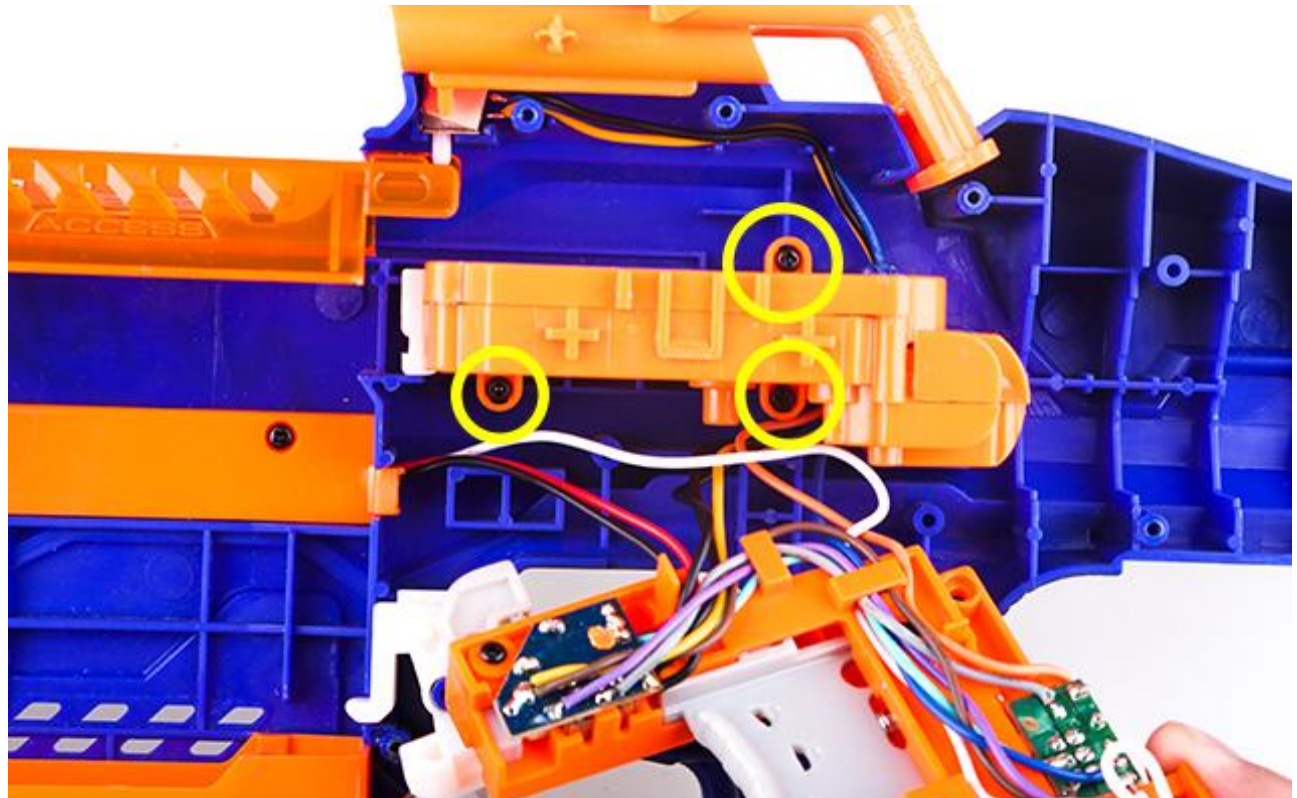
Step 4:

Remove buttstock and detach trigger module.



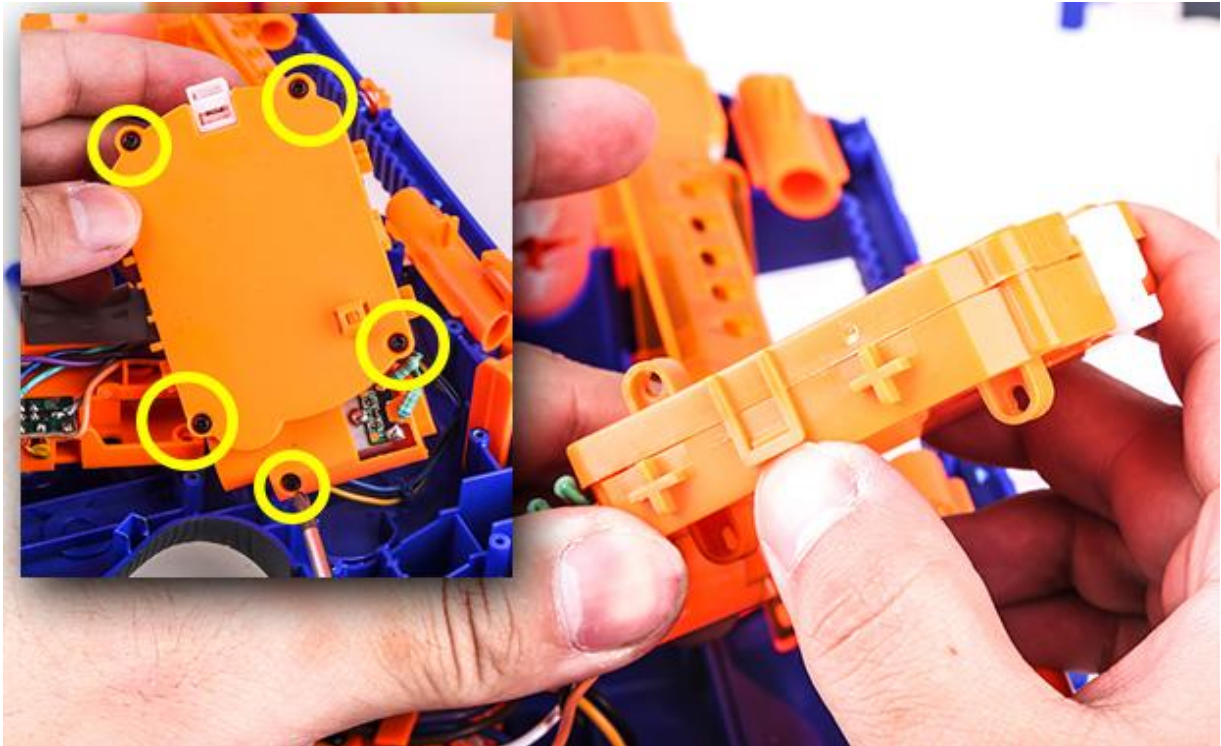
Step 5:

Remove screws (as shown) and detach the hammer module.



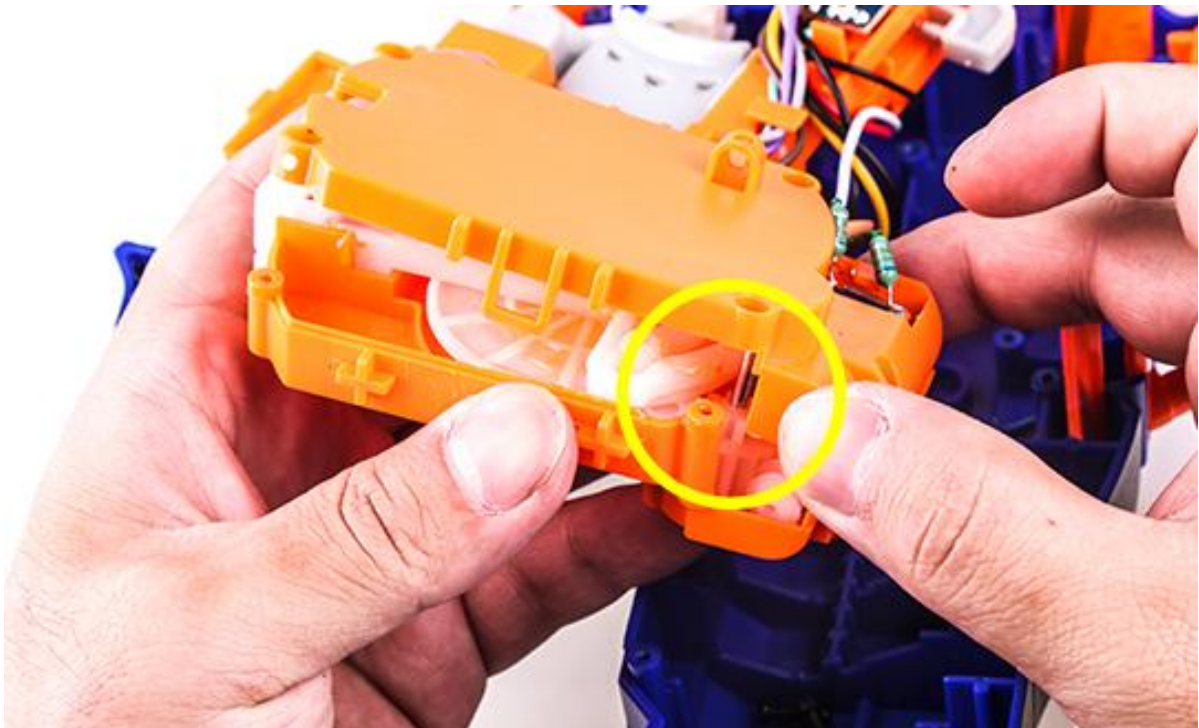
Step 6:

Detach the hammer module, remove the screws (as shown) and carefully opening the housing.



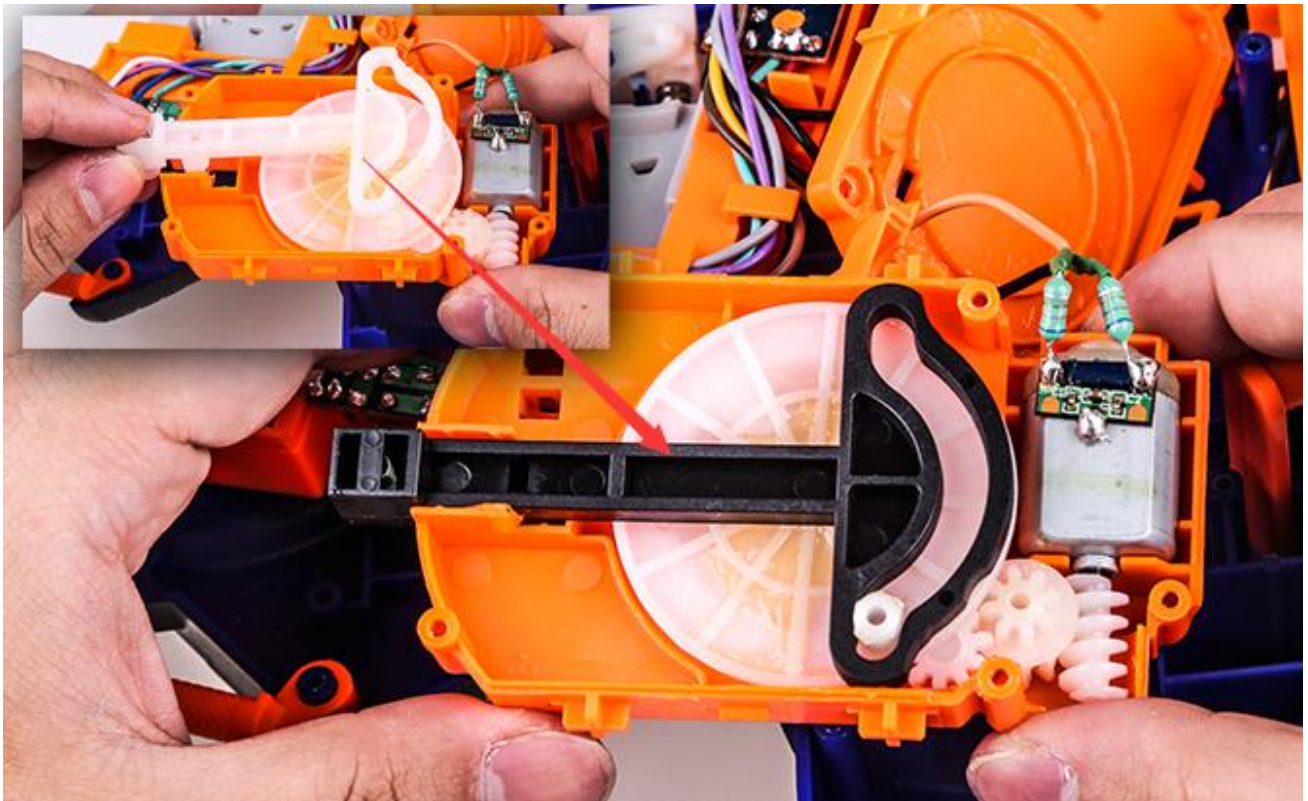
Step 7:

Keep safe the copper plate inside the module (as shown).



Step 8:

Keep safe the copper plate inside the module (as shown).



Step 9:

Check carefully the shaft and teeth in correct position before closing the module (position as shown).



Step 10:

Reverse action to assemble all the modules and screws into the body.

