

KRISS VECTOR

INSTALLATION INSTRUCTIONS



PASSION FOR THE DARTS



WORKER

F10555

Men-Gun



AK
HOMME

X.S.W

ML3D

AK-BLASTER MOD SHOP IS AN ONLINE SHOP AND WE MAKE PRODUCTS TO MODIFY AND CUSTOMIZE NERF BLASTER. WE OFFER WORKER MOD, F10555, MEN-GUN MOD, AK TACTICAL GEAR, X.S.W, ML3D, ARTIFACT, ETC BRAND PRODUCTS ON BLASTER MODDING. WE PROVIDE SERVICES ON CUSTOMIZE BLASTER WITH PARTS, 3D PRINTING AND PAINT WORKS. WE ORGANIZE BLASTER GAME ACTIVITIES AND NERF PARTY FOR KIDS. WE OFFER VENUE DESIGN, CUSTOMIZE INVITATION CARDS, HEALTHY FOODS AND CAKE, ORGANIZE NERF BATTLE GAME AND PHOTOGRAPHY SERVICES.

Disclaimer

Disclaimer:

Individual results may vary. Modding blasters is a hobby of ours, and in no way do we claim to be experts on the subject. We've written this manual for other enthusiasts who want to accomplish what we have with our blasters. However, due to legal reasons, we're unable to guarantee any results and the content in this manual should not be considered professional advice.

The use of this information and recommended products should be based on your own due diligence. You agree not to hold the authors and/or distributors of this manual liable for any success or failure of your endeavors that are directly or indirectly related to the purchase and use of our information, recommended products and services.



Make sure you have good knowledge on electric circuit and modding skill. Please read below instruction carefully and reference to online video on installing instruction.

INSTALLATION STEPS

Supplies Needed:

- Small Phillips Head Screwdriver
- Small Flat Head Screwdriver

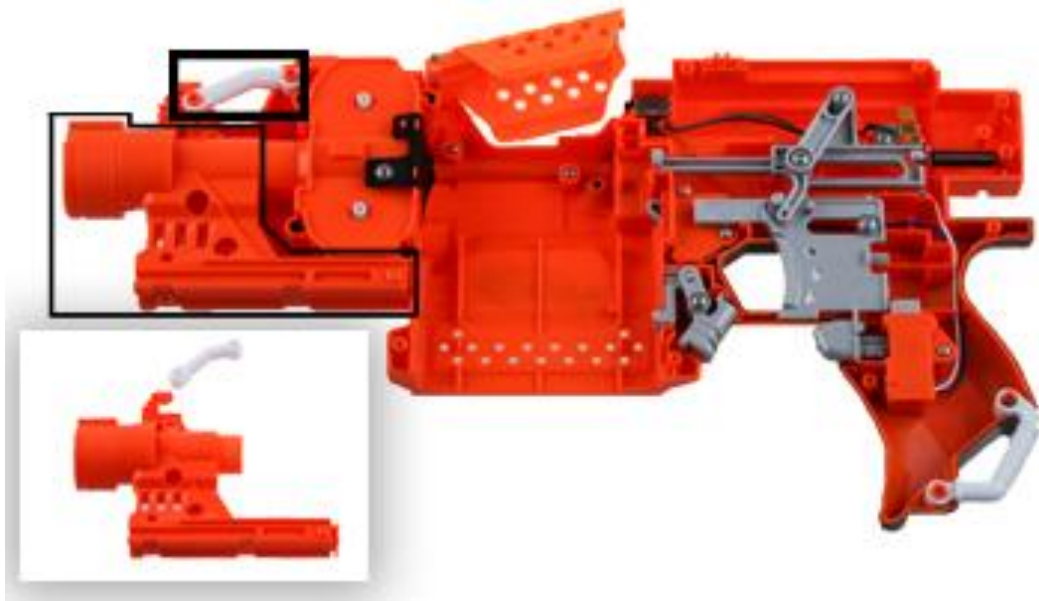
Step 1:

Remove all the screw on the blaster and beware keeping the screws in safe area.



Step 2:

Remove the muzzle and top front bridge parts, keep it safe for reverse modding.



Step 3:

Replace the muzzle with Worker MOD F10555 Stryfe muzzle.



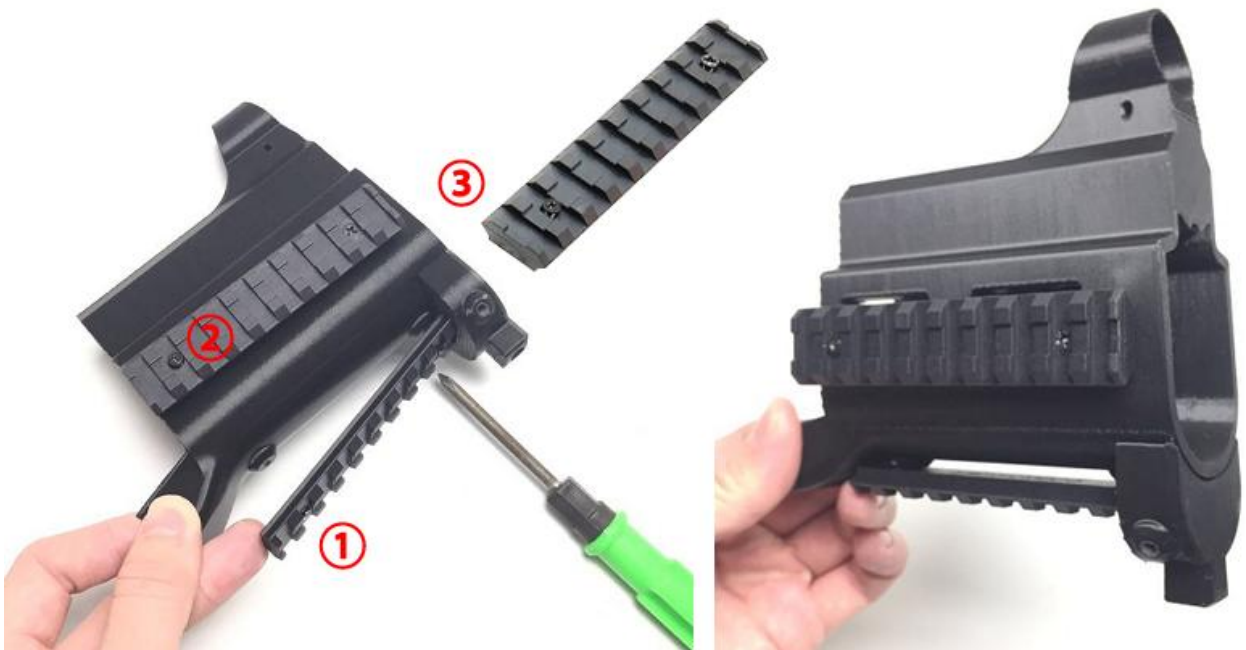
Step 4:

Cover the blaster shell back and fasten all the screws.



Step 5:

Install the 3pcs 10cm rail onto the barrel jacket, secure by fasten all the screws.



Step 6:

Insert and push the barrel jacket parts into the muzzle. Secure the barrel jacket by fastening the screw under.



Step 7:



Step 8:

Install the rear sight onto the top rail parts, secure with fastening the screw.



Step 9:

Slide the module toward the end of the blaster rail and a bit more as shown image.

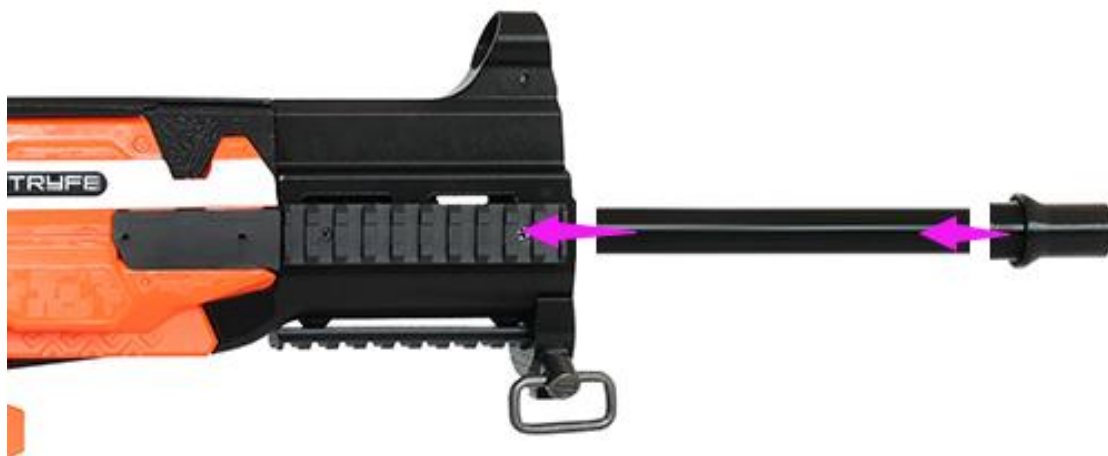


Step 10:

Slide back the rail module to the front, ensure the front fit into as shown image, fasten the screw to secure the rail module.



Step 11:



Step 12

