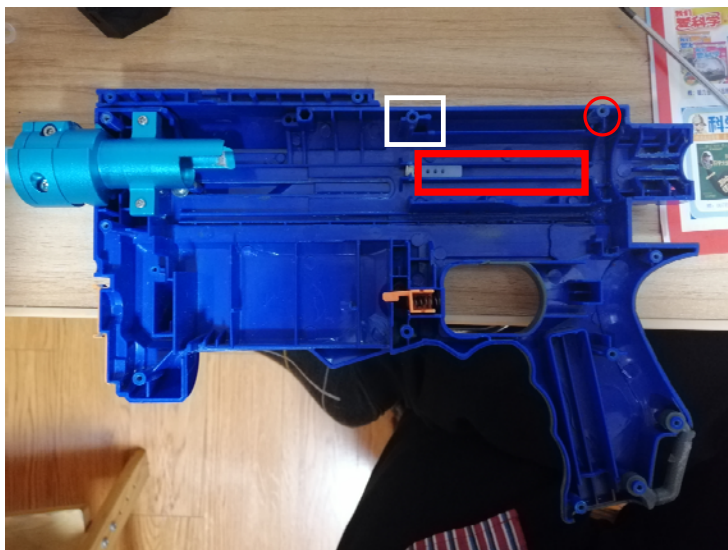


# Suggested tools for installation



Right Halve  
(Original)



Right Halve  
(After Trimming)



Red Rectangle: Remove shell ridges and grind to flatten with shell wall  
Red Circle: Remove the screw holding column  
White Rectangle: Remove the screw holding column

Right Halve  
(Original)



Right Halve  
(After Trimming)



Yellow Dotted Rectangle: Trim the shell ridge to remain 2mm height  
Green Dotted Rectangle: Trim the shell ridge to remain 4mm height  
Red Circle: Remove the support column, flatten with the shell ridge

Right Halve  
(Original)



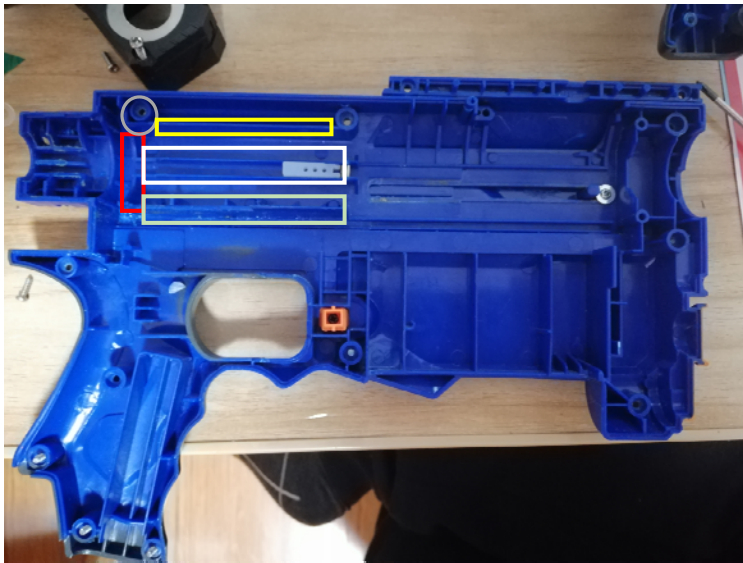
Right Halve  
(After Trimming)



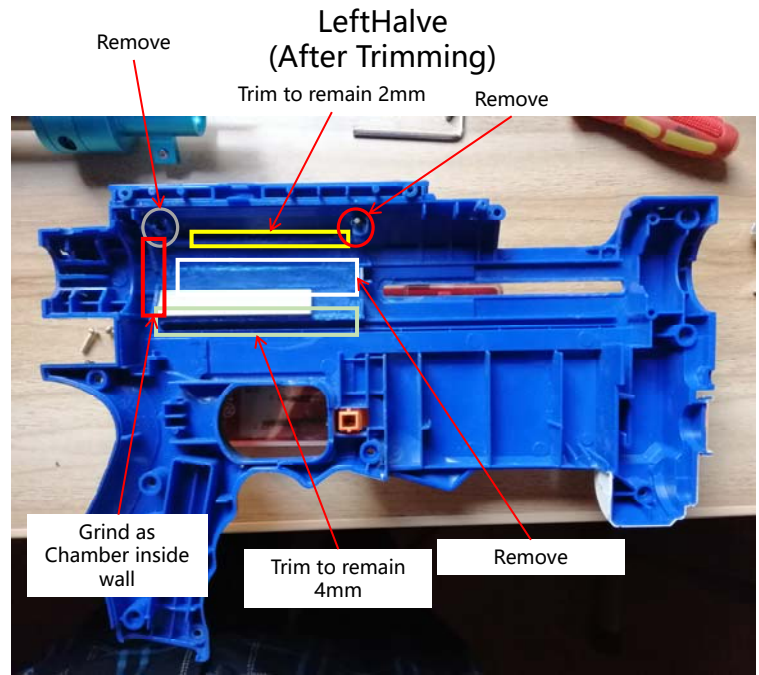
Grind carefully on the supporting ridge behind the chamber, the contour size should exactly the same as the chamber inside wall. This is an important step that allow the ridge hold the chamber well and ensure the plunger rod could get thought the chamber and the shell.



Left Halve  
(Original)



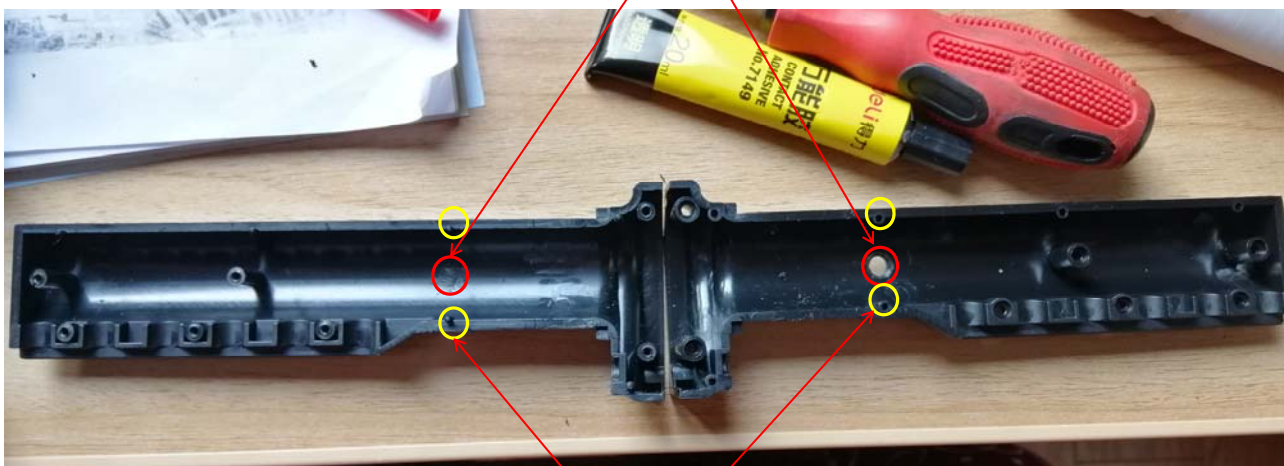
LeftHalve  
(After Trimming)



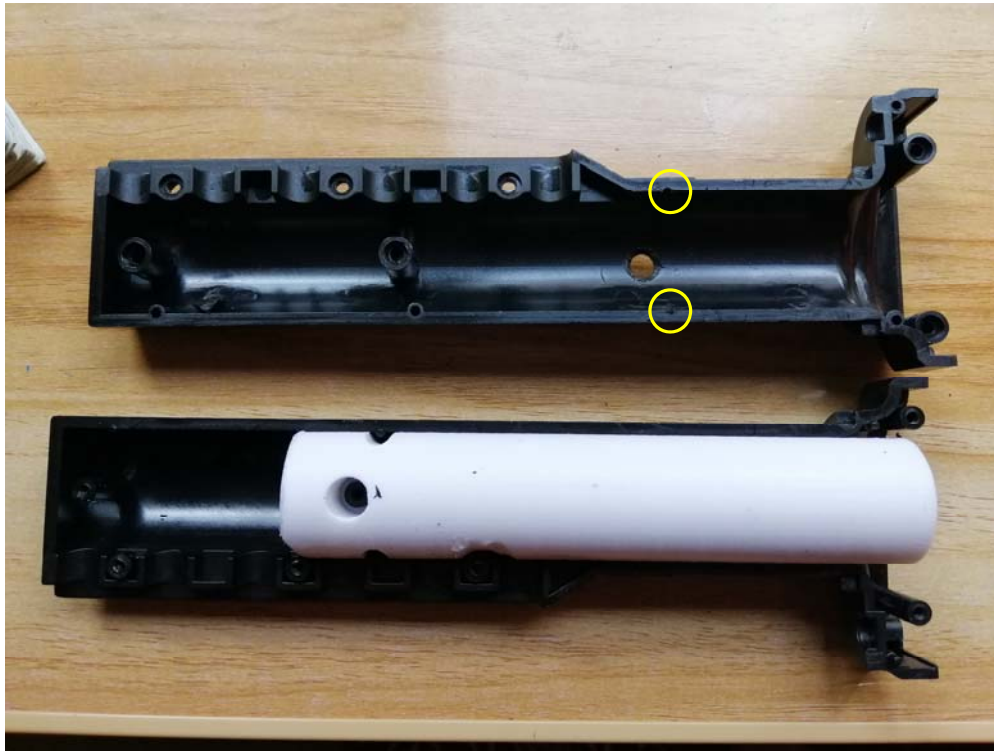
All procedure same as right halve.

Buffer Tube

Red Circle: Remove the screw holding column



Yellow Circle: Trim and remove the column



Yellow Circle: Trim  
and remove the  
column

Install the  
spring  
containing  
block into  
the buffer  
tube

Stick the Chamber  
Holding pieces  
with instant Glue  
onto the shell



Install the  
chamber on  
the fixture  
pieces



Install all  
other  
modules



Finish

