

FULLY AUTOMATIC BOLT HAMMER

INSTALLATION INSTRUCTIONS



PASSION FOR THE DARTS



WORKER

F10555



AK
HOMME

X.S.W

ML3D

AK-BLASTER MOD SHOP IS AN ONLINE SHOP AND WE MAKE PRODUCTS TO MODIFY AND CUSTOMIZE NERF BLASTER. WE OFFER WORKER MOD, F10555, MEN-GUN MOD, AK TACTICAL GEAR.XSW.ML3D, ARTIFACT, ETC BRAND PRODUCTS ON BLASTER MODDING. WE PROVIDE SERVICES ON CUSTOMIZE BLASTER WITH PARTS, 3D PRINTING AND PAINT WORKS. WE ORGANIZE BLASTER GAME ACTIVITIES AND NERF PARTY FOR KIDS. WE OFFER VENUE DESIGN, CUSTOMIZE INVITATION CARDS, HEALTHY FOODS AND CAKE, ORGANIZE NERF BATTLE GAME AND PHOTOGRAPHY SERVICES.

Disclaimer

Disclaimer:

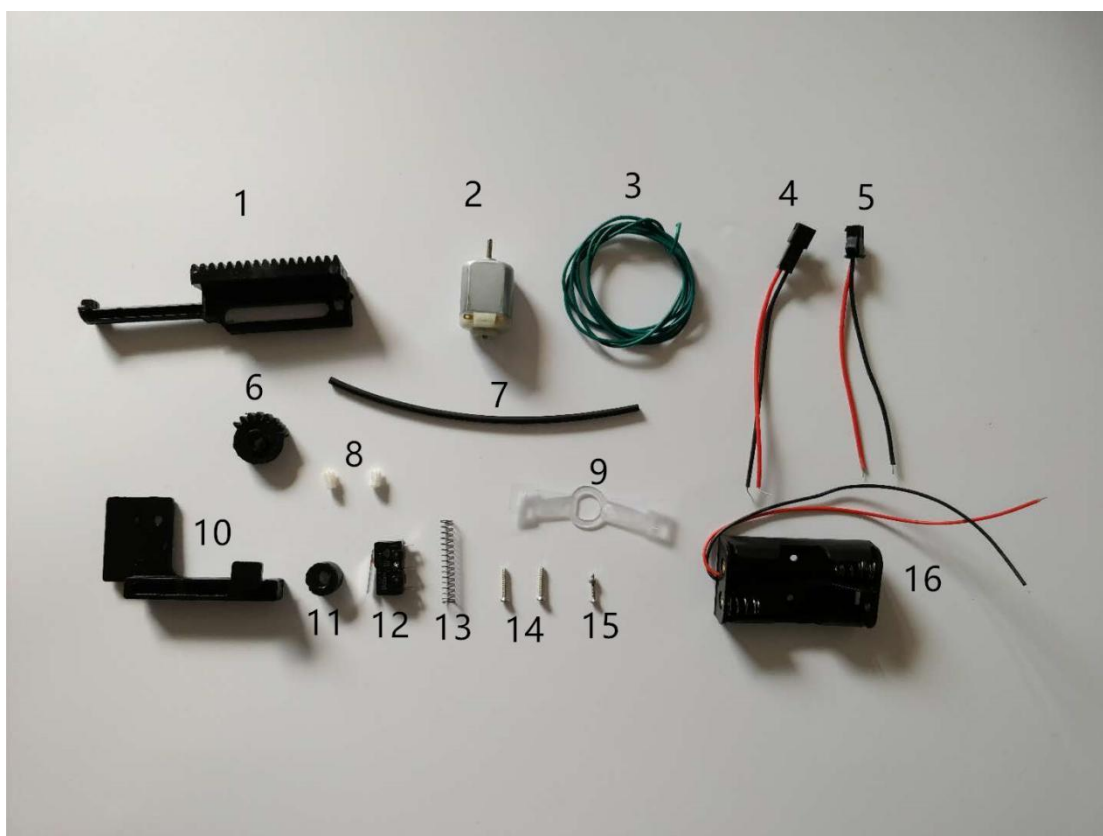
Individual results may vary. Modding blasters is a hobby of ours, and in no way do we claim to be experts on the subject. We've written this manual for other enthusiasts who want to accomplish what we have with our blasters. However, due to legal reasons, we're unable to guarantee any results and the content in this manual should not be considered professional advice.

The use of this information and recommended products should be based on your own due diligence. You agree not to hold the authors and/or distributors of this manual liable for any success or failure of your endeavors that are directly or indirectly related to the purchase and use of our information, recommended products and services.



Make sure you have good knowledge on electric circuit and modding skill. Please read below instruction carefully and reference to online video on installing instruction.

INSTALLATION STEPS



1. 推杆*1 Bolt Hammer
2. 小马达*1 130 Motor
3. 电线*1 Circuit Wire
4. SM 母头*1 SM Socket (Female)
5. SM 公头*1 SM Socket (Male)
6. 齿轮*1 Lever Gear

7. 热缩管*1 Heat Shrink Tubing
8. 马达齿轮*2（一颗备用齿轮） Motor Gearwheel
9. 电机固定绑带*1 Motor Fixture
10. 齿轮箱定位板*1 Gear Box Cage Fixture
11. 推杆定位环*1 Bolt Fixture
12. 微动*1 Microswitch
13. 弹簧*1 Spring Coil
14. 齿轮箱螺丝*2 Gear Box Screw
15. 定位板齿轮箱固定螺丝螺母*1 Cage Fixture Screw
16. 电池盒*1 Battery Box
17. 黄色齿轮箱*1 Gear Box

Module Installation

Step 1:

Insert the Gearwheel onto the motor shaft, leave a gap in between the motor and the gearwheel.



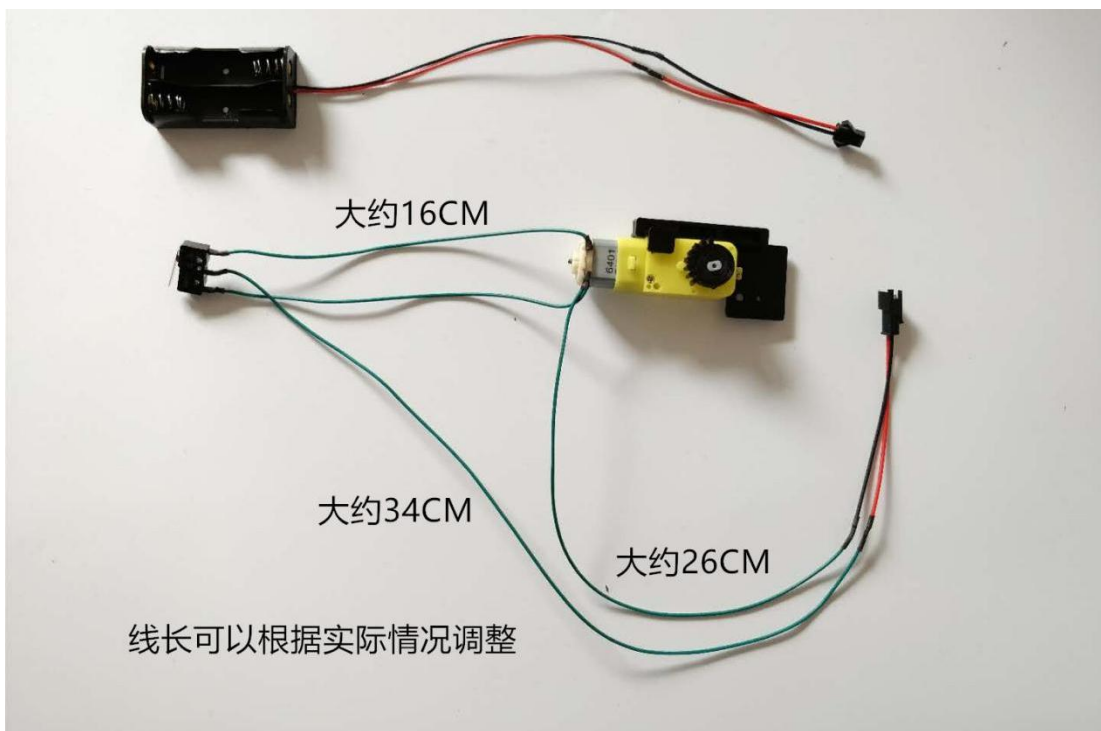
Step 2:

Fasten the Gear Box Screw (14) into Gear Box (17), insert the Lever Gear (6) onto the shaft at the side of Gear Box. Install the Gear Box Cage Fixture (10)



Step 3:

Connect the circuit as shown below image, wire length for reference only, vary to actual modding requirement and user favour.



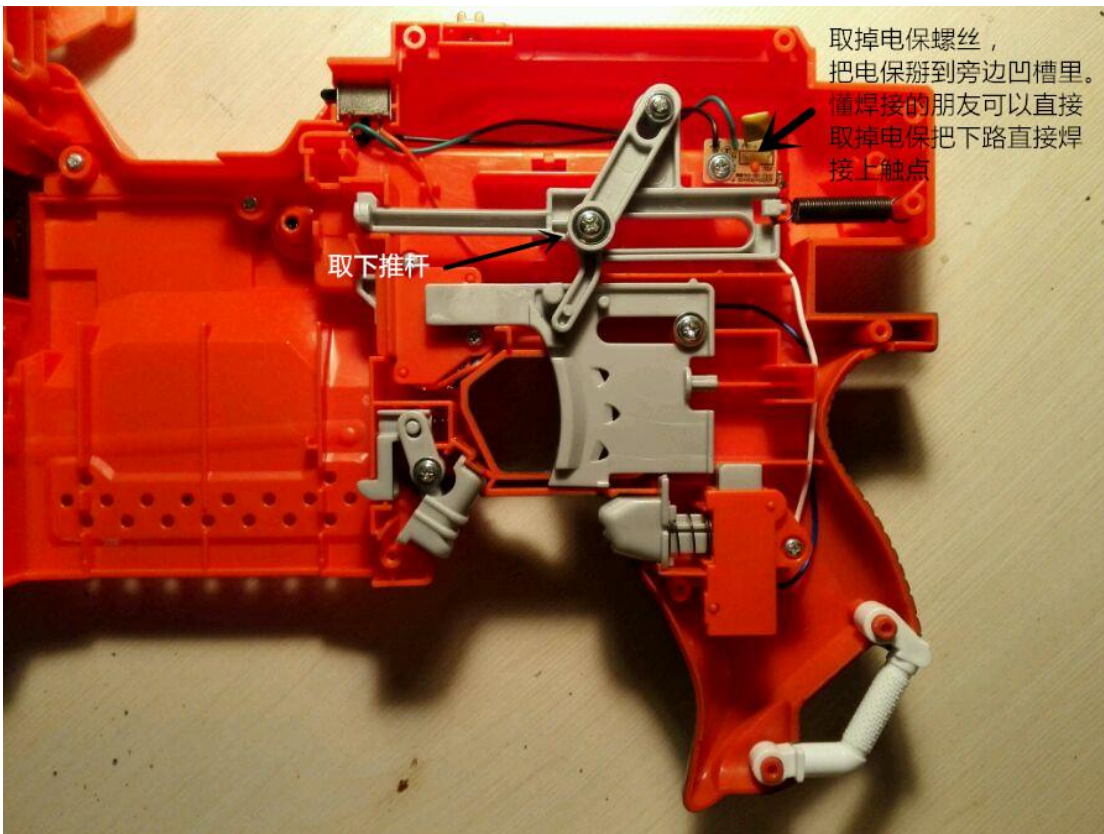
Installation

Step 1:

Disassemble the blaster with the help of screw driver.



1.用螺丝刀取出死拽夫外壳固定螺丝，并打开外壳。



Remove the stock hammer lever

Remove the screw holding the circuit protector board, place the board at a side that would not hinder the gear box.

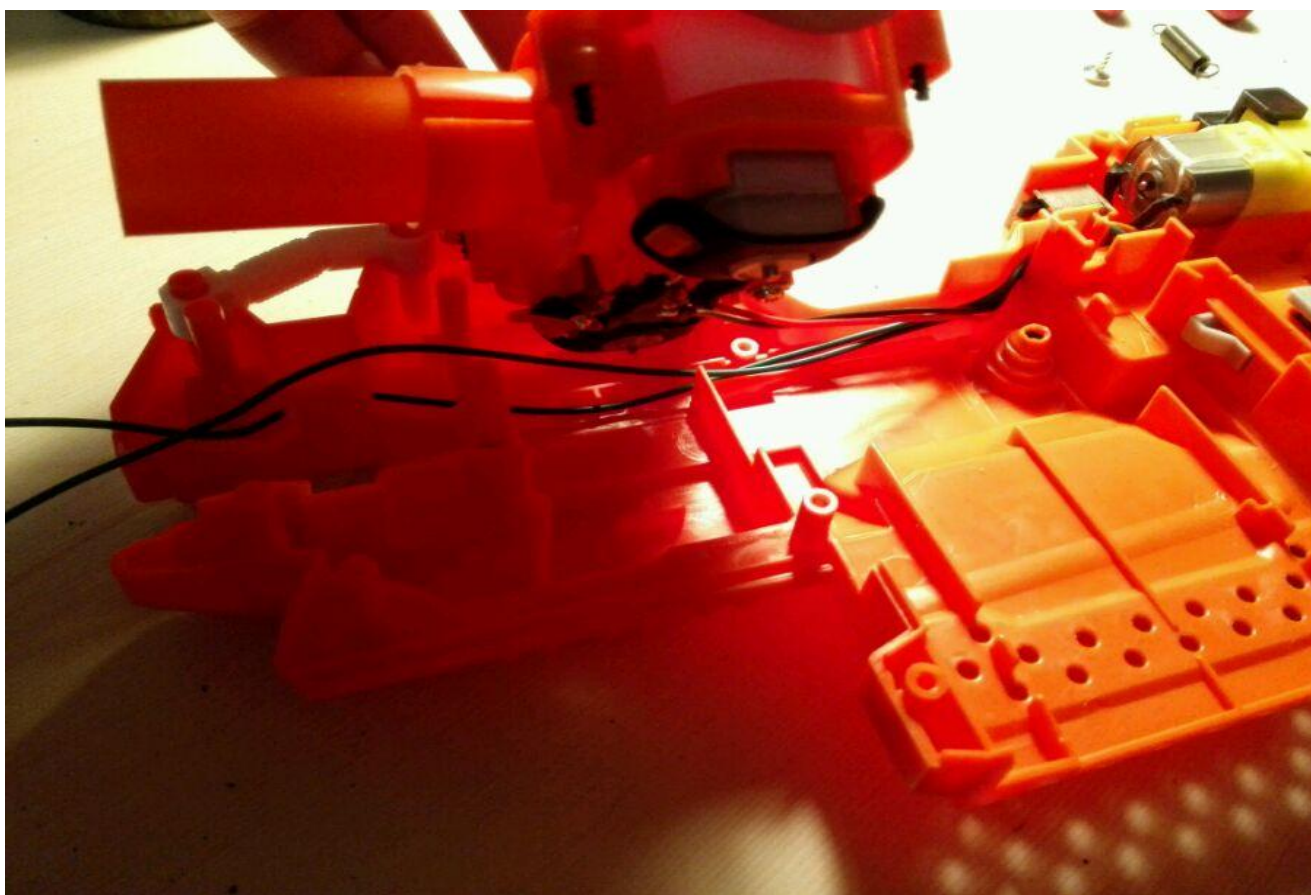
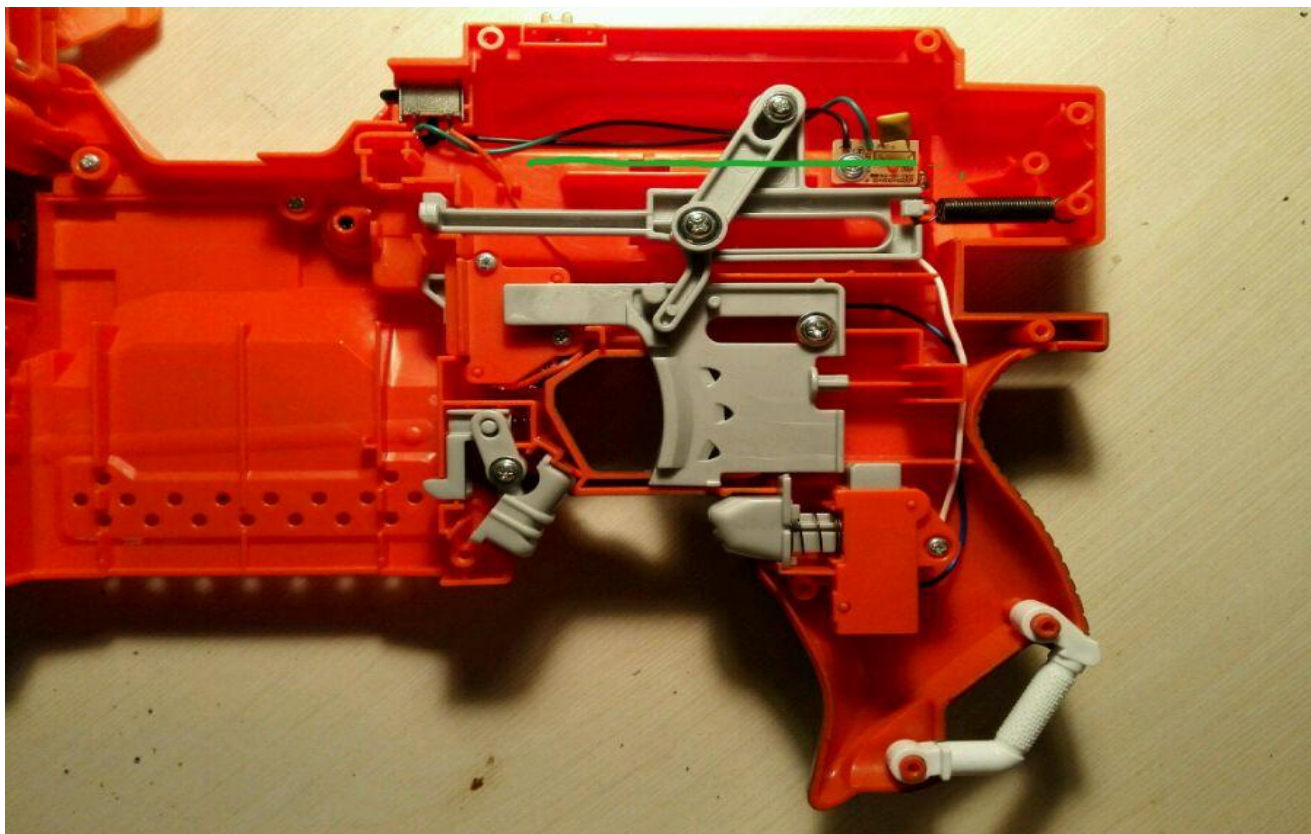


Remove the plastic ridge on the stock battery cage, removing the ridge gives room to place the gear box.

Step 2:
Install the gear box into the blaster shell



Place all the circuit wire under the gear box module, install the gear box and fasten the stock circuit protector board screw.

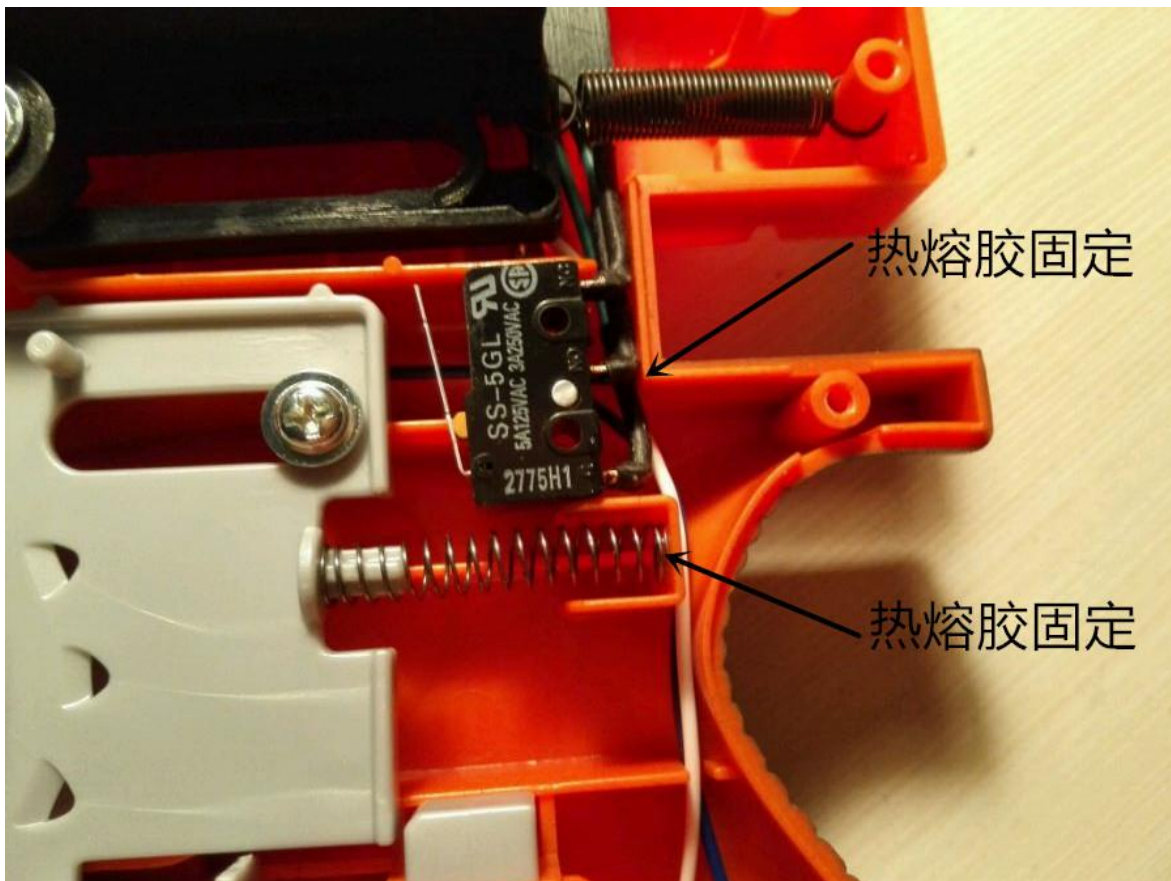




According to user favour to locate the battery box, the battery box wire shall long enough to go from the front muzzle or rear butt stock.

Step 3:

Install the microswitch and trigger spring as shown location and secure with hot glue.



Step 4:

Install the bolt hammer and bolt fixture as shown image, secure the fixture with the stock screw, leave a small gap to allow slide movement between the bolt hammer and the fixture.



Installation complete and test for complete circuit operation. Finish testing and fasten all the screw back to the blaster shell.