

XSW XMD-1



PASSION FOR THE DARTS



WORKER

F10555



**AK
HOMME**

X.S.W ML3D

AK-BLASTER MOD SHOP IS AN ONLINE SHOP AND WE MAKE PRODUCTS TO MODIFY AND CUSTOMIZE NERF BLASTER. WE OFFER WORKER MOD, F10555, MEN-GUN MOD, AK TACTICAL GEAR.XSW.ML3D, ARTIFACT, ETC BRAND PRODUCTS ON BLASTER MODDING. WE PROVIDE SERVICES ON CUSTOMIZE BLASTER WITH PARTS, 3D PRINTING AND PAINT WORKS. WE ORGANIZE BLASTER GAME ACTIVITIES AND NERF PARTY FOR KIDS. WE OFFER VENUE DESIGN, CUSTOMIZE INVITATION CARDS, HEALTHY FOODS AND CAKE, ORGANIZE NERF BATTLE GAME AND PHOTOGRAPHY SERVICES.

Disclaimer

Disclaimer:

Individual results may vary. Modding blasters is a hobby of ours, and in no way do we claim to be experts on the subject. We've written this manual for other enthusiasts who want to accomplish what we have with our blasters. However, due to legal reasons, we're unable to guarantee any results and the content in this manual should not be considered professional advice.

The use of this information and recommended products should be based on your own due diligence. You agree not to hold the authors and/or distributors of this manual liable for any success or failure of your endeavors that are directly or indirectly related to the purchase and use of our information, recommended products and services.



Make sure you have good knowledge on electric circuit and modding skill. Please read below instruction carefully and reference to online video on installing instruction.

INSTALLATION STEPS

Supplies Needed:

- Small Phillips Head Screwdriver
- Small Flat Head Screwdriver

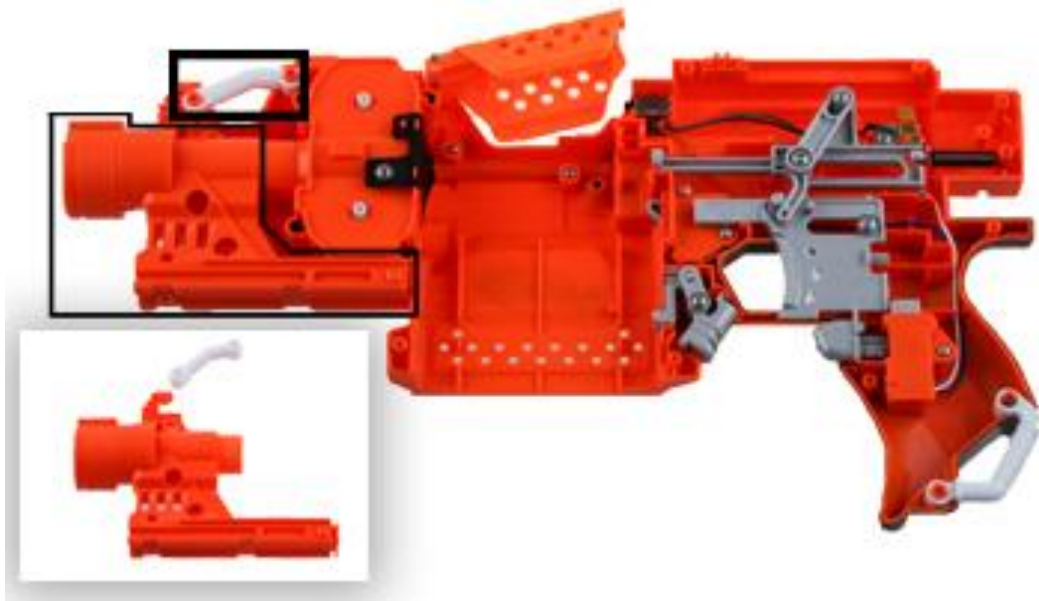
Step 1:

Remove all the screw on the blaster and beware keeping the screws in safe area.



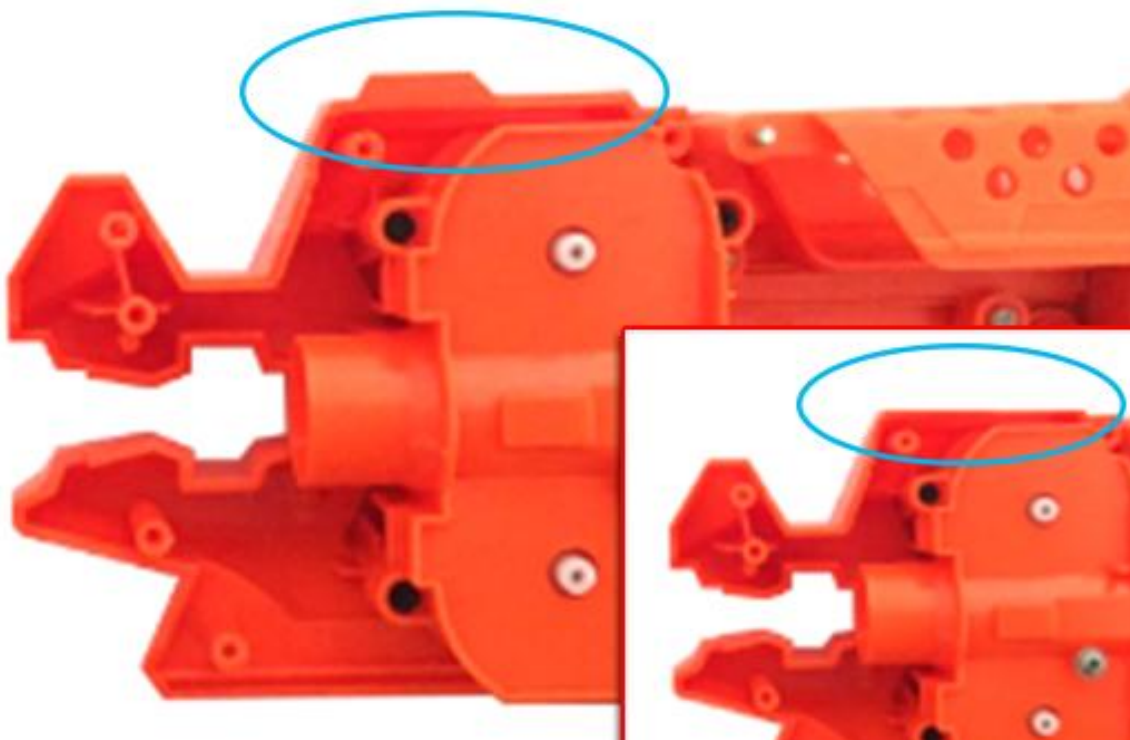
Step 2:

Remove the muzzle and top front bridge parts, keep it safe for reverse modding.



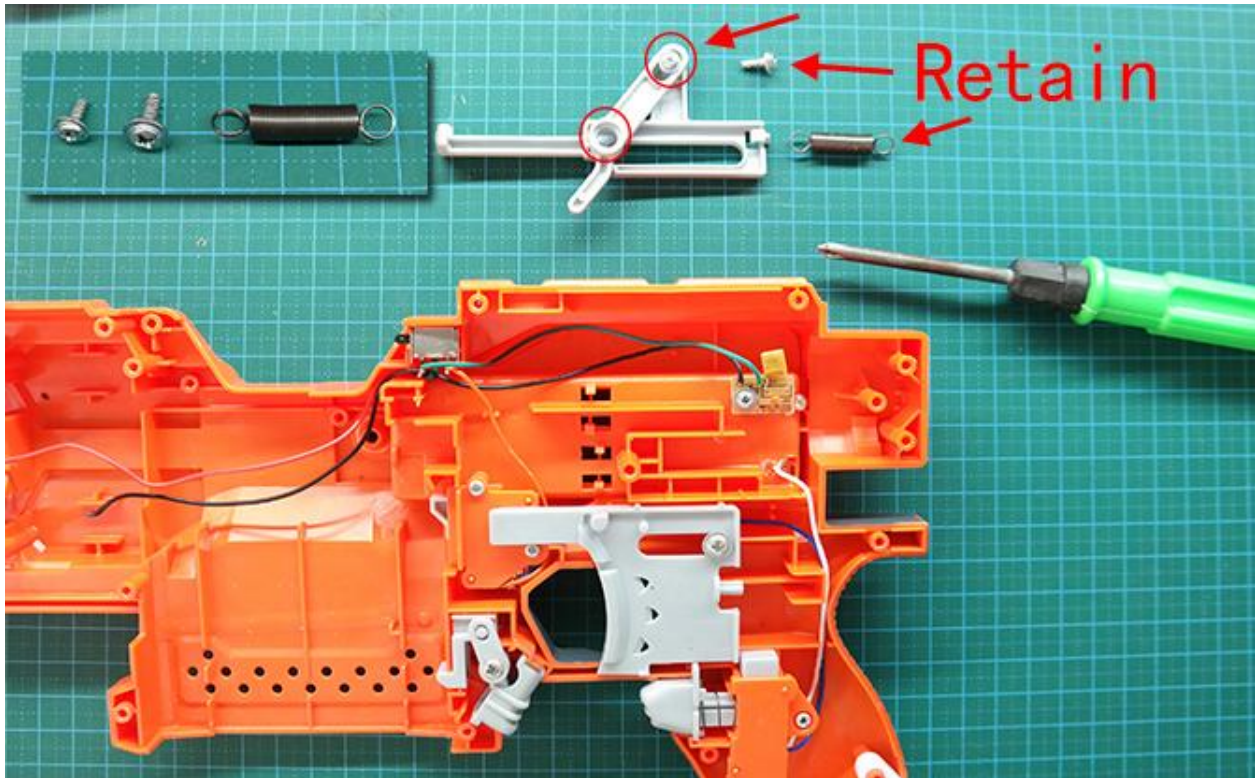
Step 3:

Trim and flatten the front sight on the blaster shell

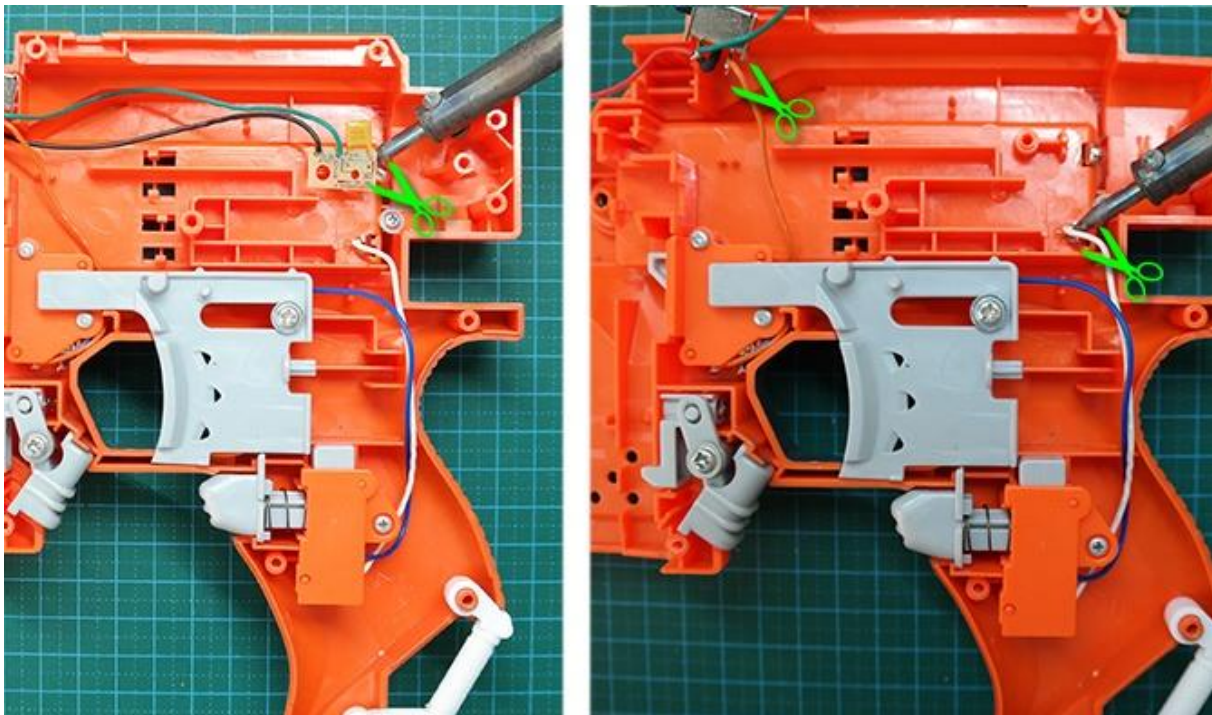


Step 4:

Remove the dart pusher and level parts, keep them well for later reverse modding if necessary.

**Step 5:**

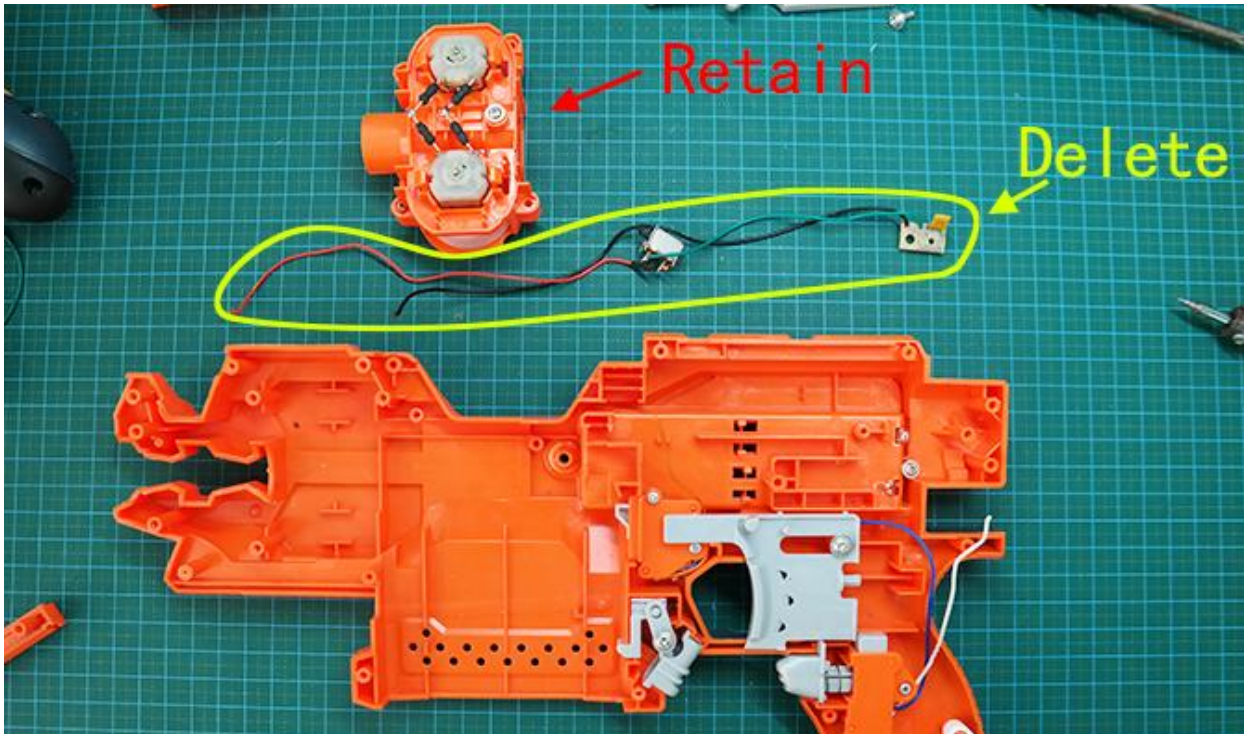
Remove the circuit protection board as shown. Trim and remove the wire connecting the battery box.



Step 6:

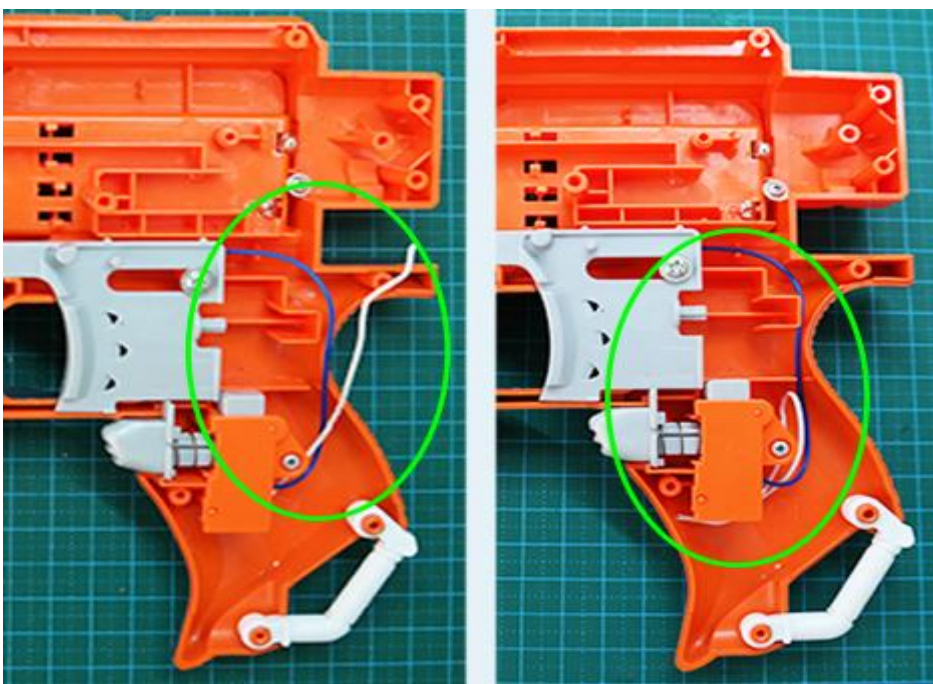
Remove the wire circuit that contain the circuit protector and jam door switch as shown.

Trim and remove the wire connecting the flywheel module, keep the flywheel module in place.



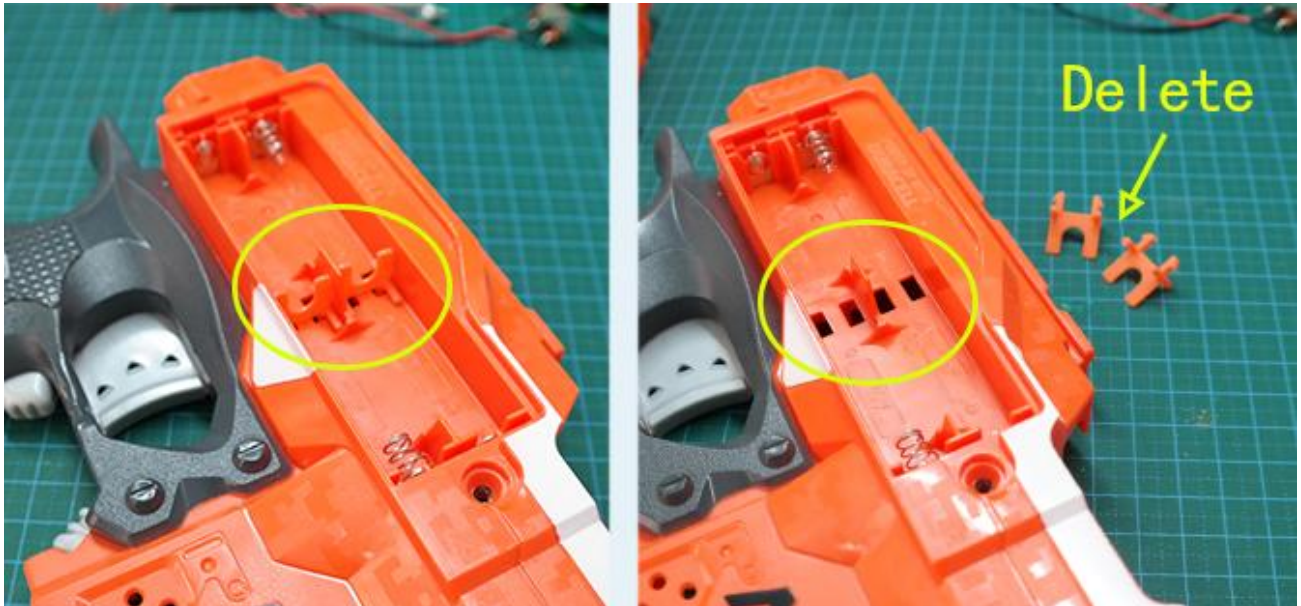
Step 7:

Retain the wire on the rev trigger and keep it inside the grip. This set wire would be disabled in this kit.

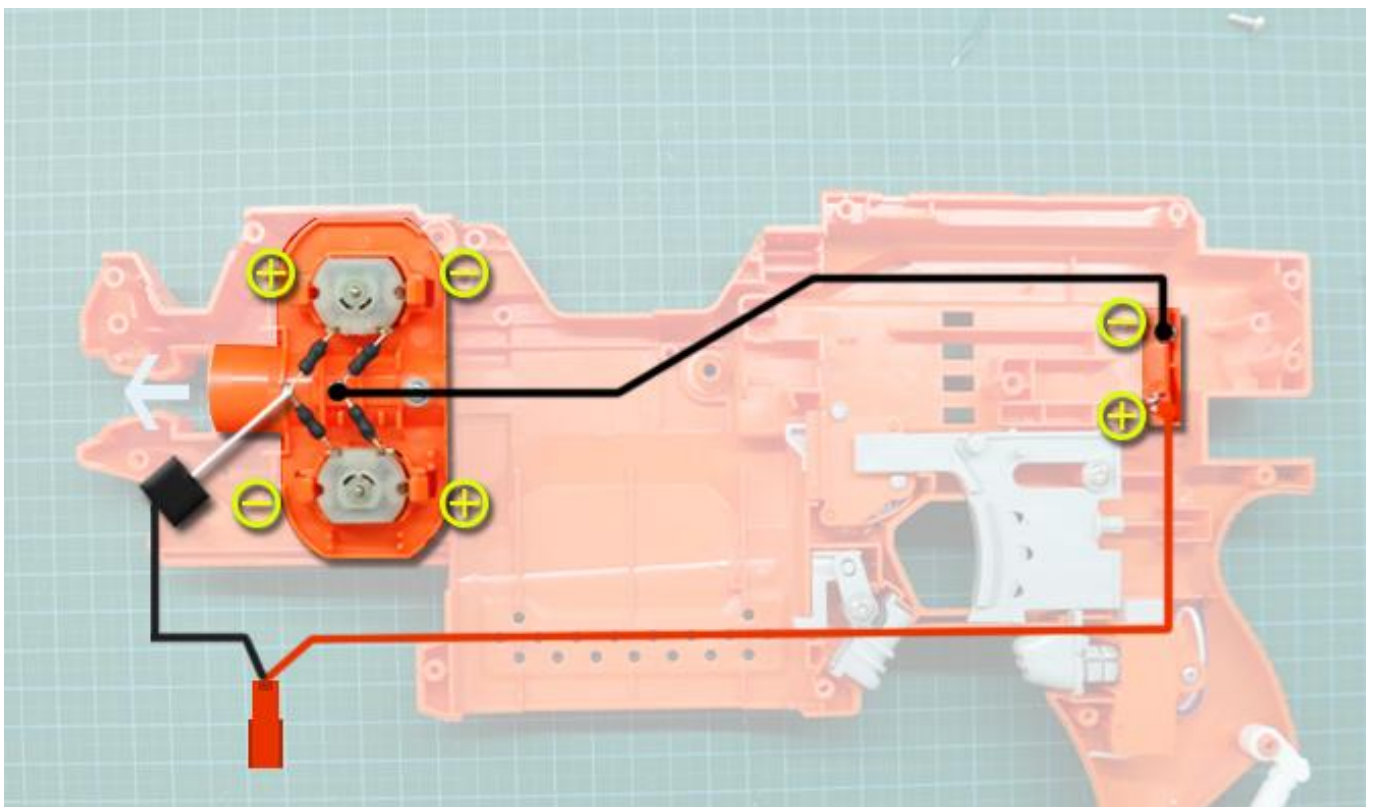


Step 8:

Remove the battery compartment inside the battery box as shown.

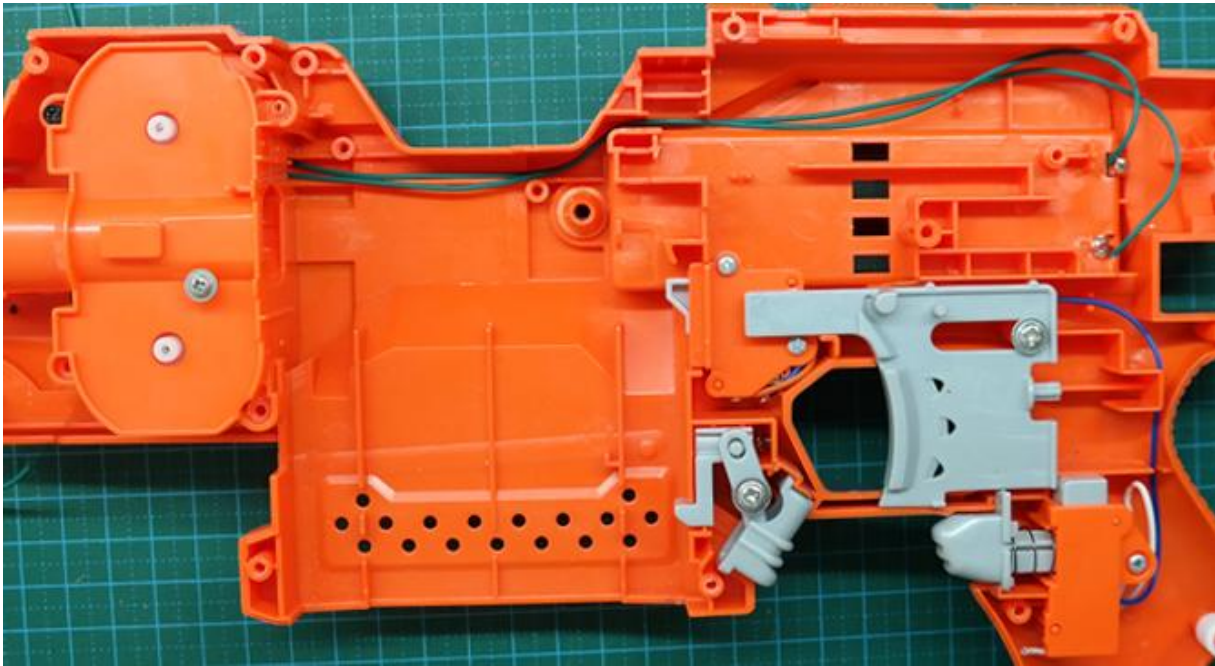
**Step 9:**

Reconnect the power supply circuit, connect the battery box to the flywheel module as shown, be careful on the electric poles that connect with the motors and battery box. A diode added to the circuit to protect the switches.

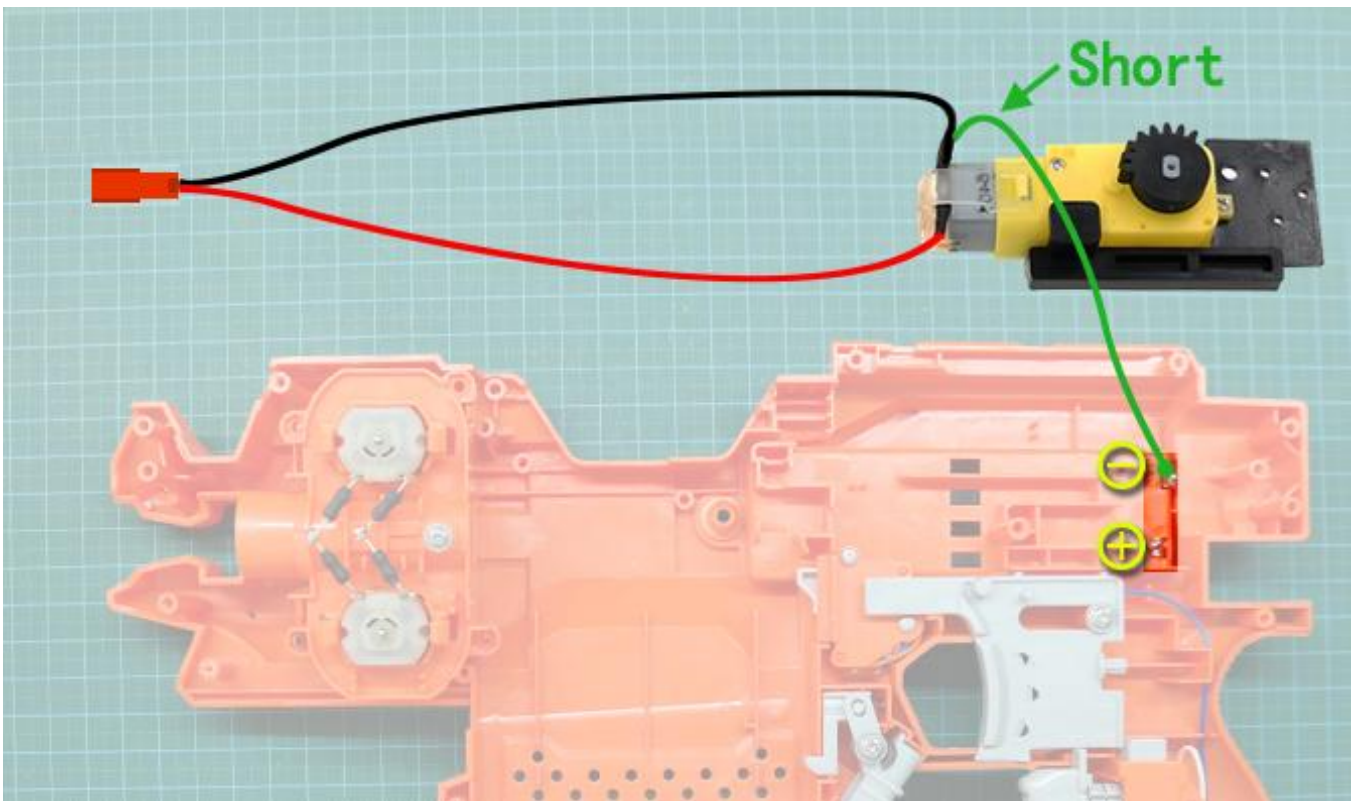


Step 10:

Install the motor module back to the shell, keep all the electric wire in place.

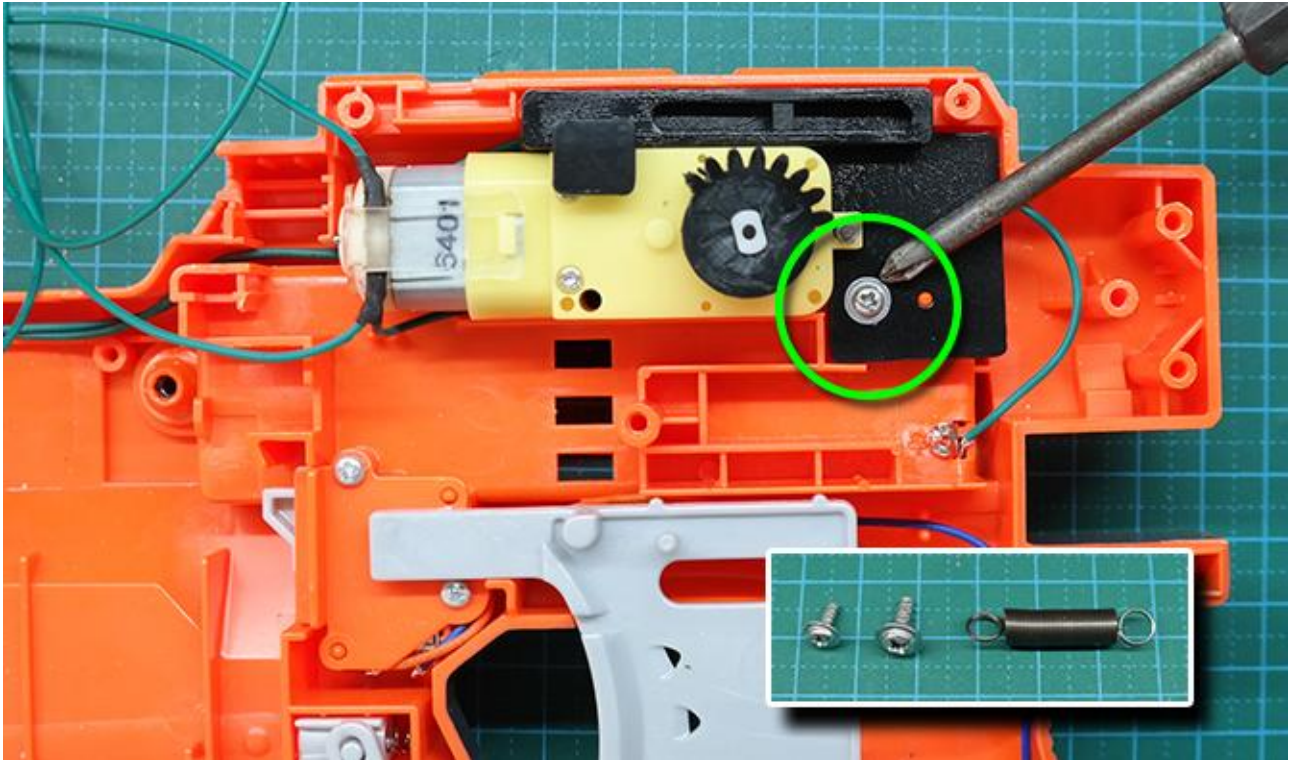
**Step 11:**

Connect the auto strike module to the battery box, solder the short green wire to the negative pole of battery box.



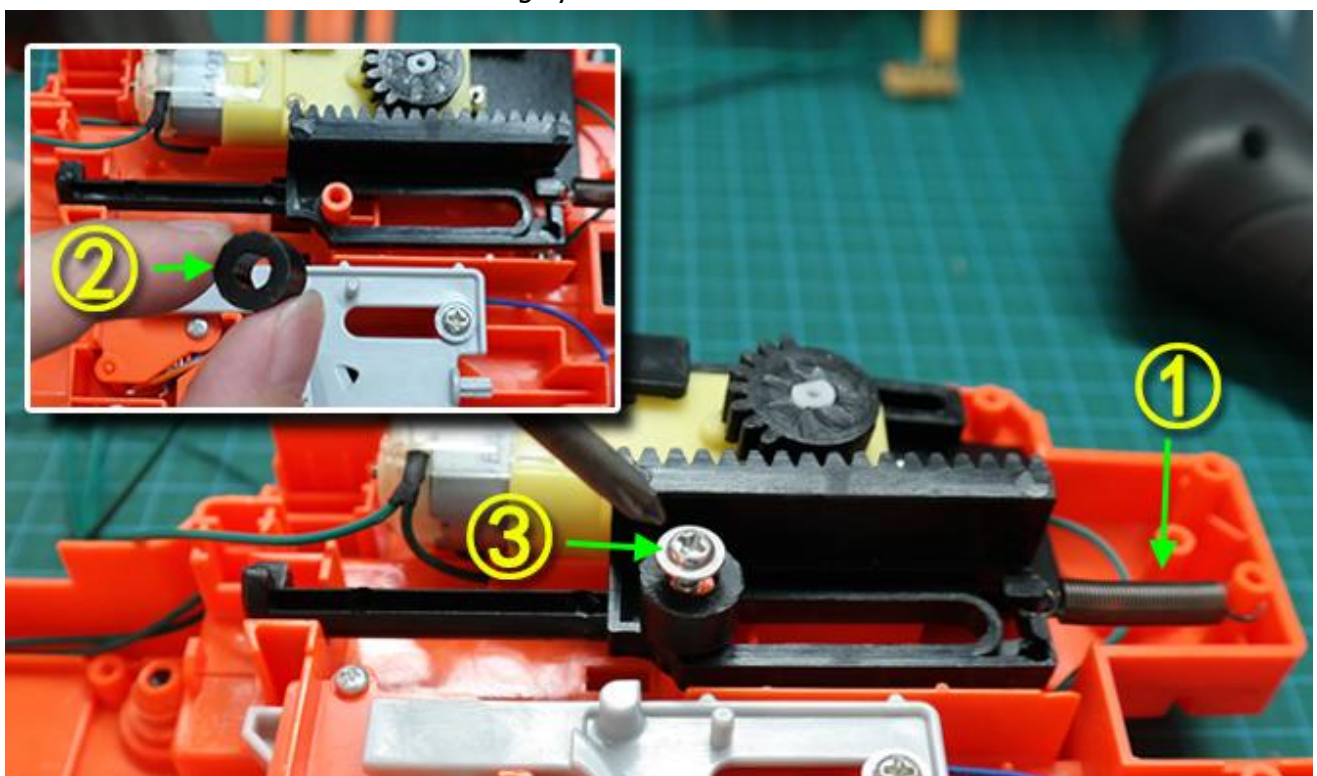
Step 12:

Install the auto strike motor onto the shell, secure the motor plate and fasten the screw make it in place.

**Step 13:**

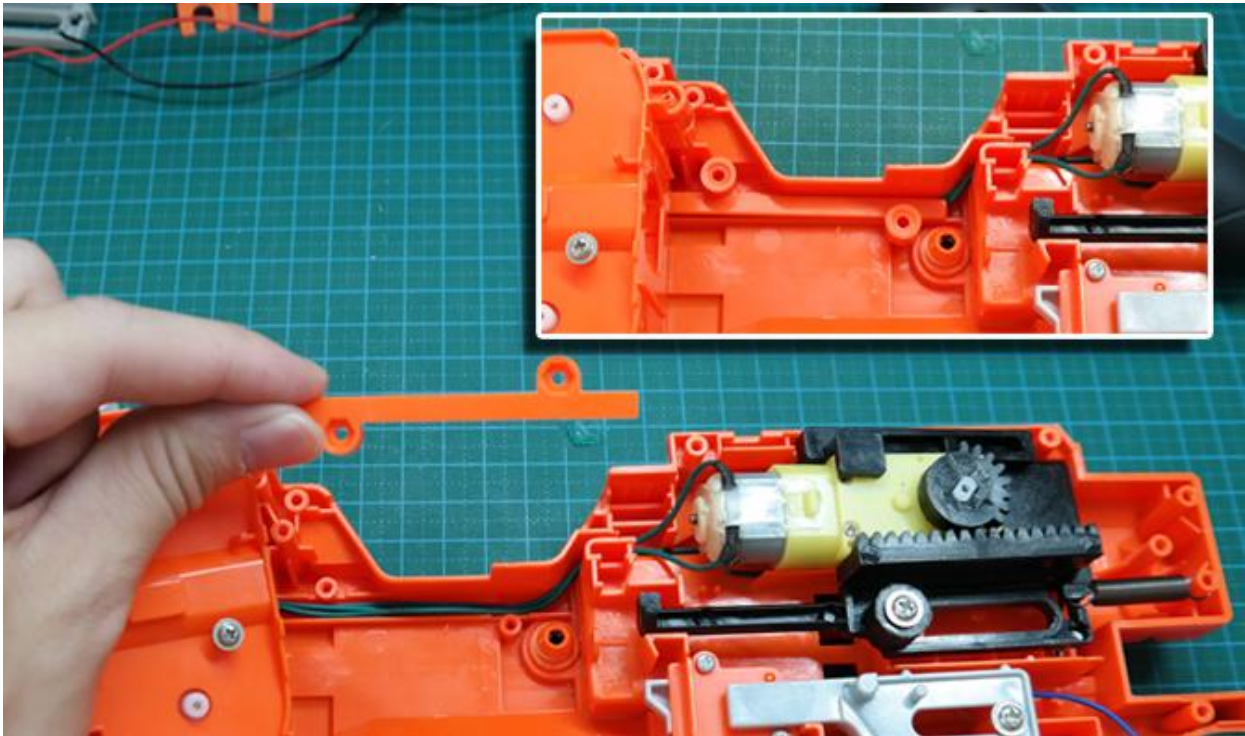
Install the dart pusher under the motor set.

1. Install the spring connecting the pusher end and the blaster shell.
2. Install a sliding cylinder onto the blaster shell screw column, and keep the pusher secure.
3. Fasten the screw to secure the sliding cylinder.

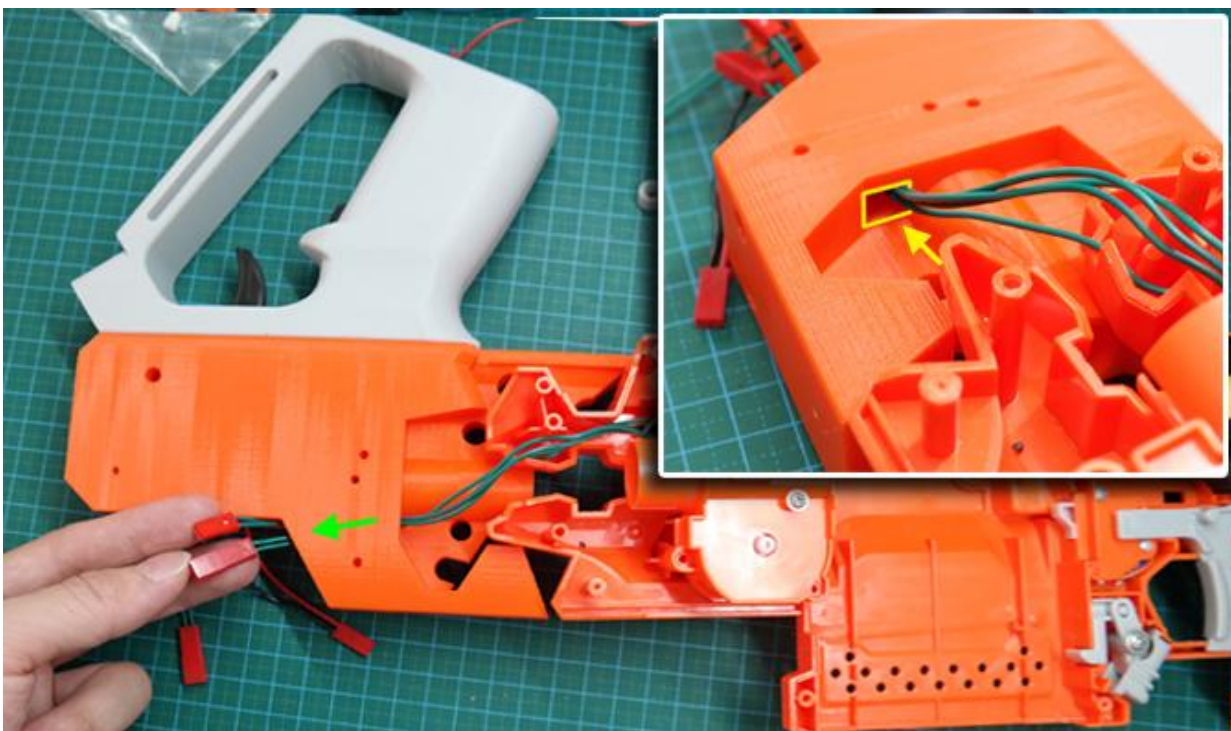


Step 14:

Put the wire cover piece back to the blaster shell, keep all wire in position.

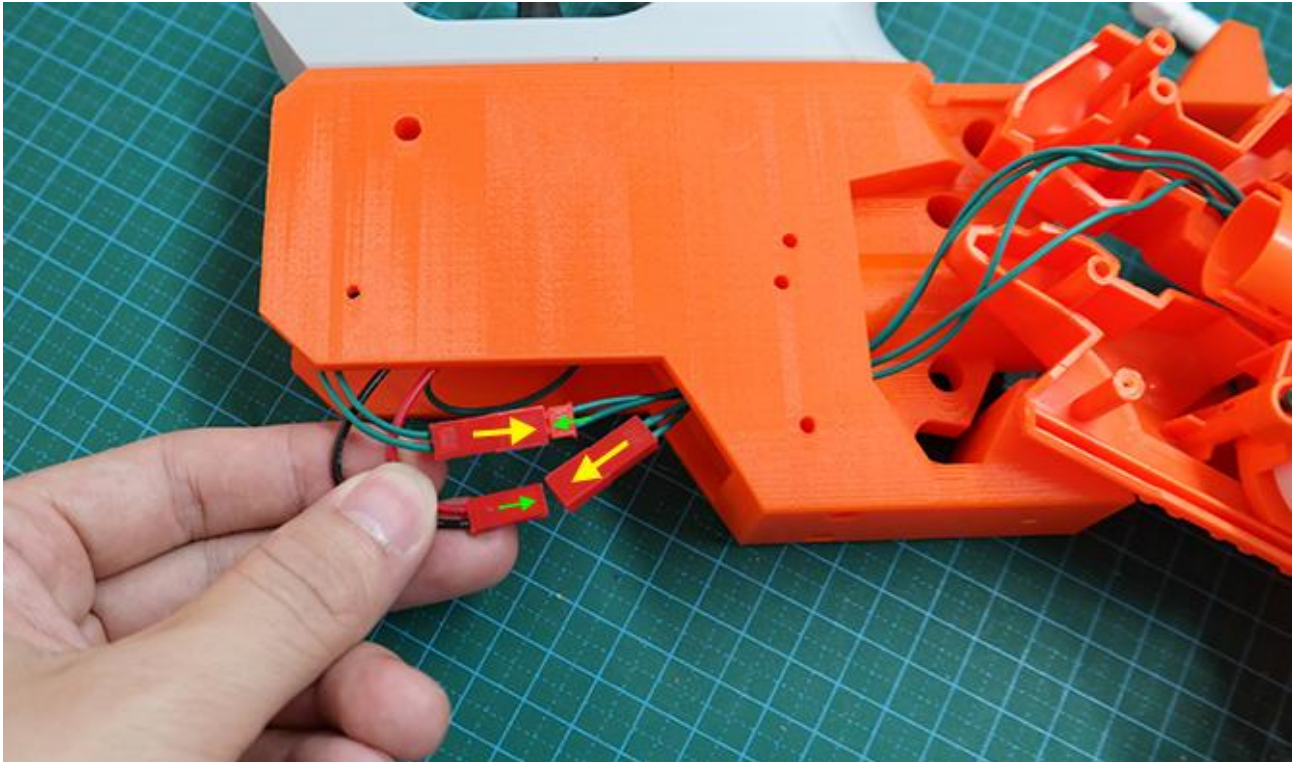
**Step 15:**

Put the two connectors pass through the channel built inside the barrel as shown.

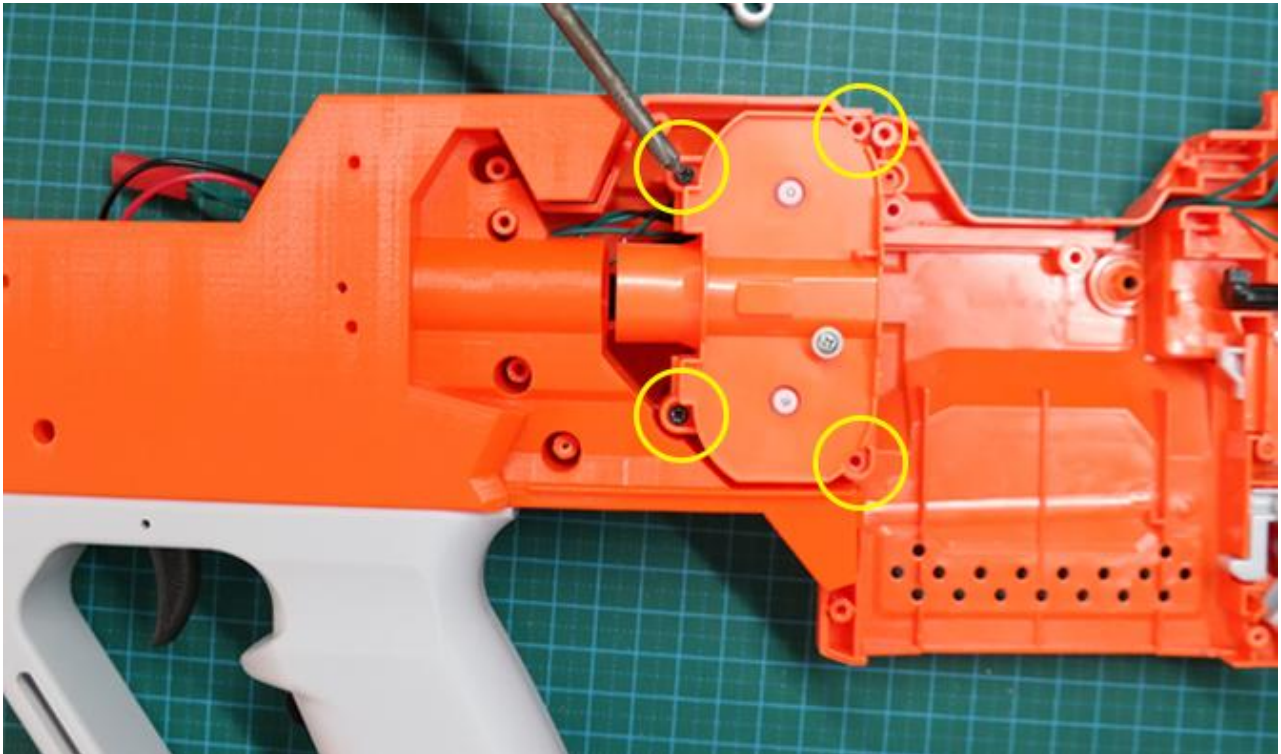


Step 16:

Match the two sets connectors between the grip module and blaster shell module, plug and ensure connection done.

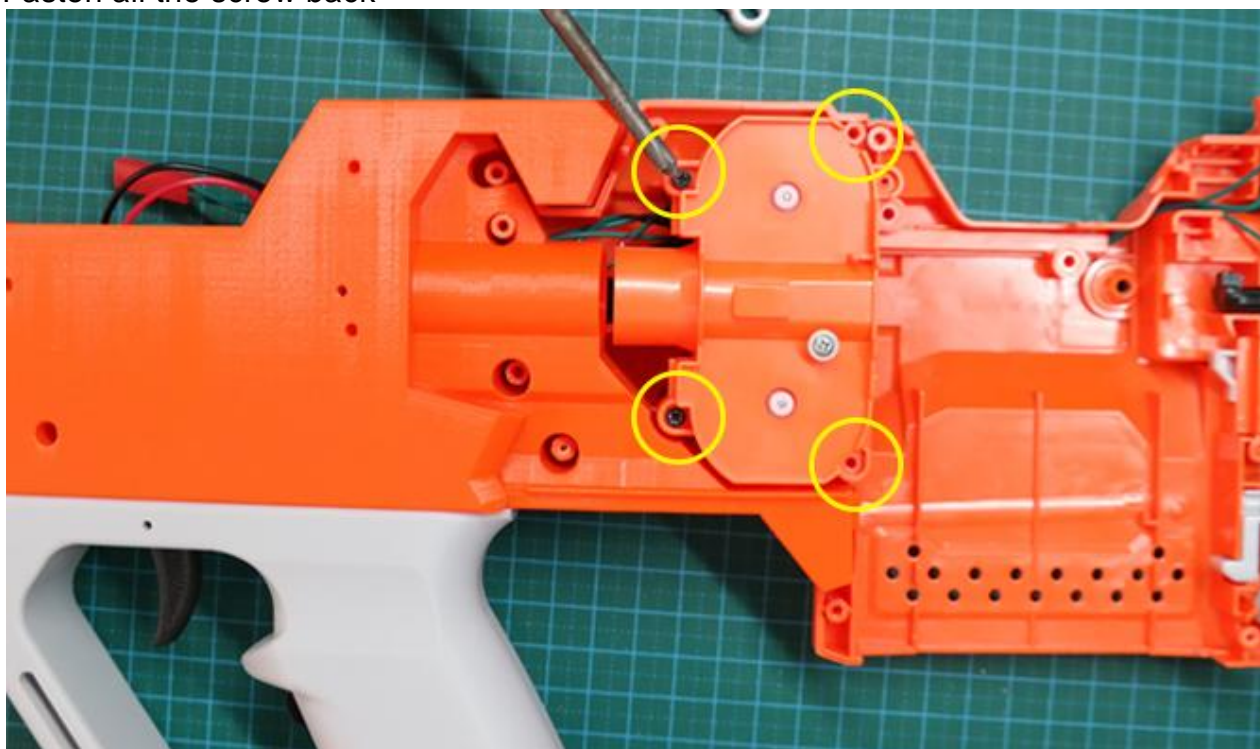
**Step 18:**

Install the motor module back to the blaster shell, ensure all the screws fasten well in position.



Step 19:

Fasten all the screw back



Step 20:

Fasten all the screw back to the blaster shell.



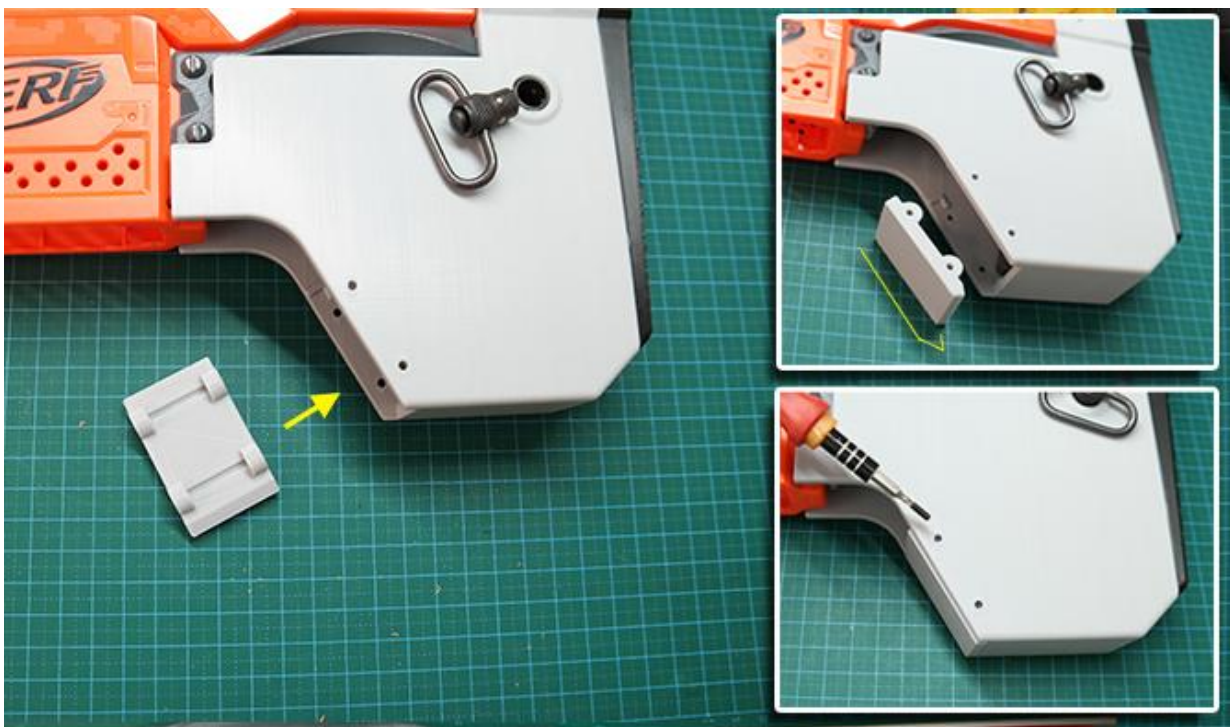
Step 21:

Install the buttstock to the blaster as shown direction. Insert the metal piece into the quick detach hole.

Install the QD sling into the buttstock.

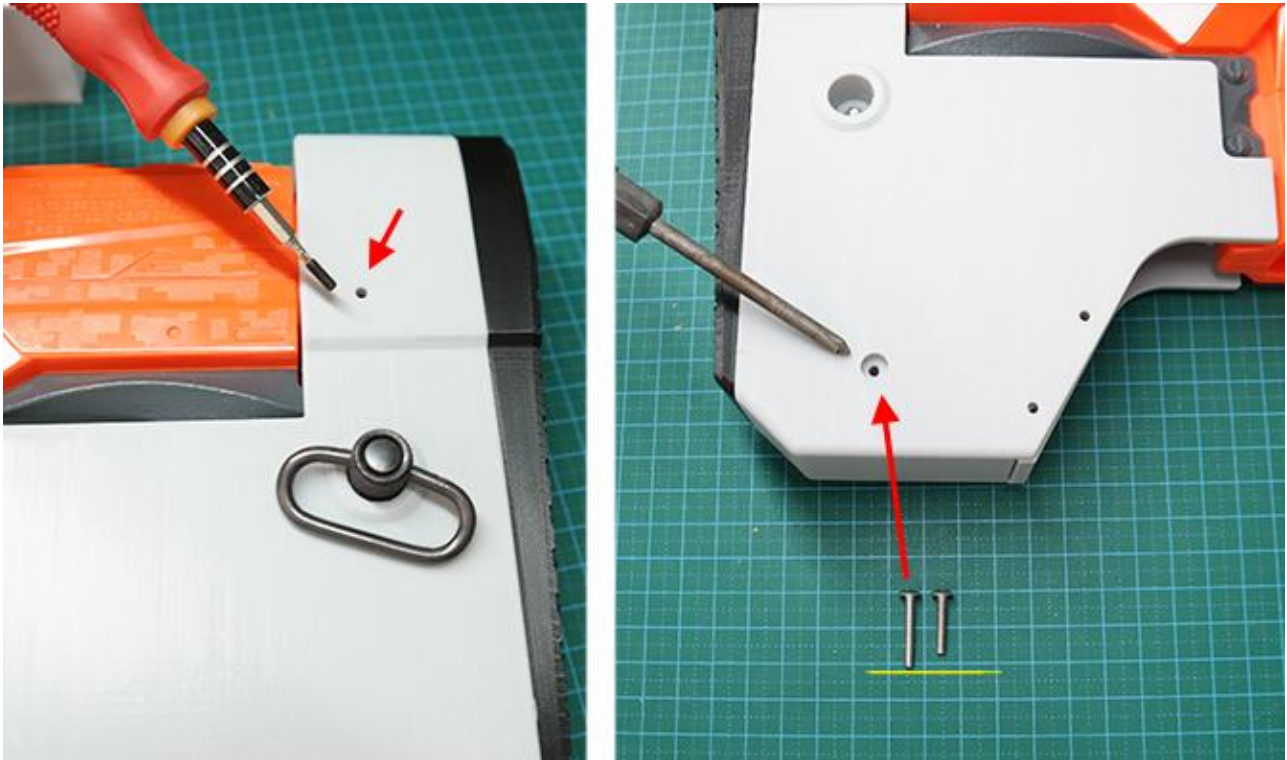
**Step 22:**

Install the cover plate to the bottom of buttstock, fasten the screw to secure the plate.



Step 22:

Fasten all the screw on the buttstock body, and secure in position.

**Step 23:**

Install the top rail plate to the blaster body, slide the rail plate from to front along the blaster tactical rail. Slide to the end and fasten the screw to secure in position.

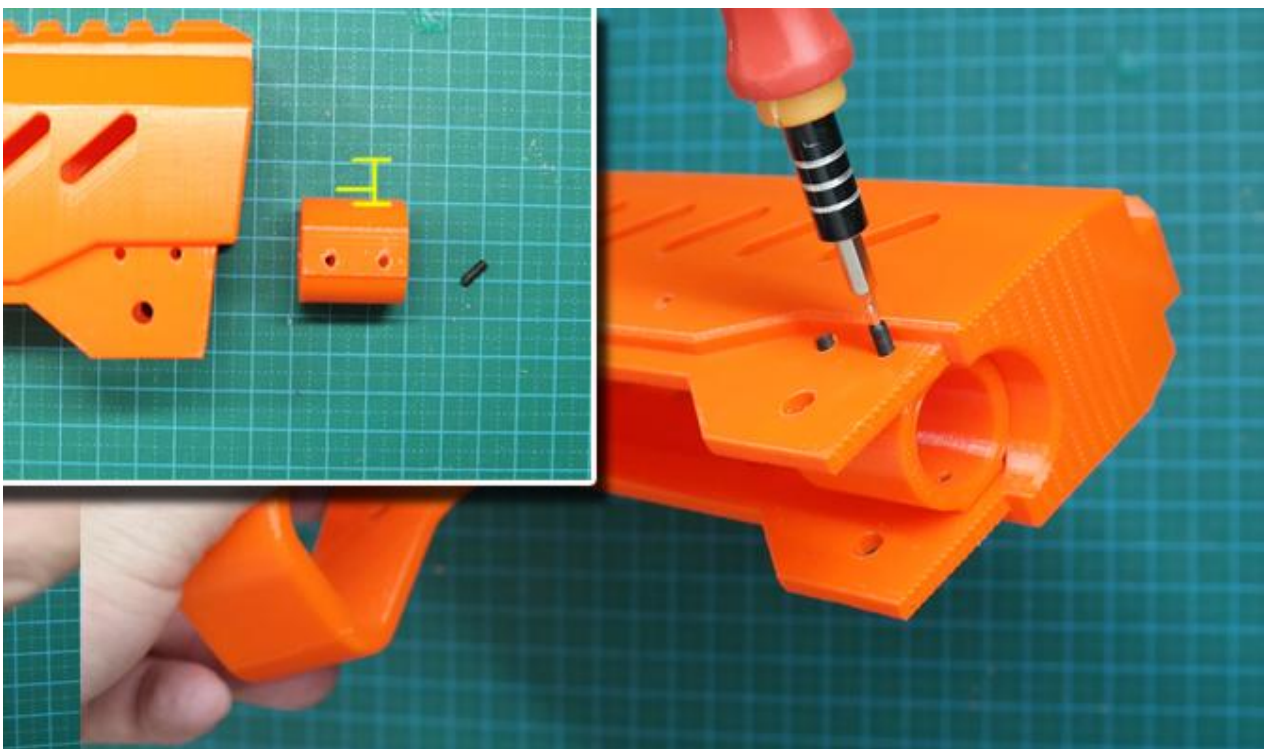


Step 24:

Insert the barrel tube to the grip module, push from the front and end with touching the stock style muzzle.

**Step 25:**

Install the barrel tube fixture to the barrel jacket as shown, fasten all the screw to the jacket body and secure in position.

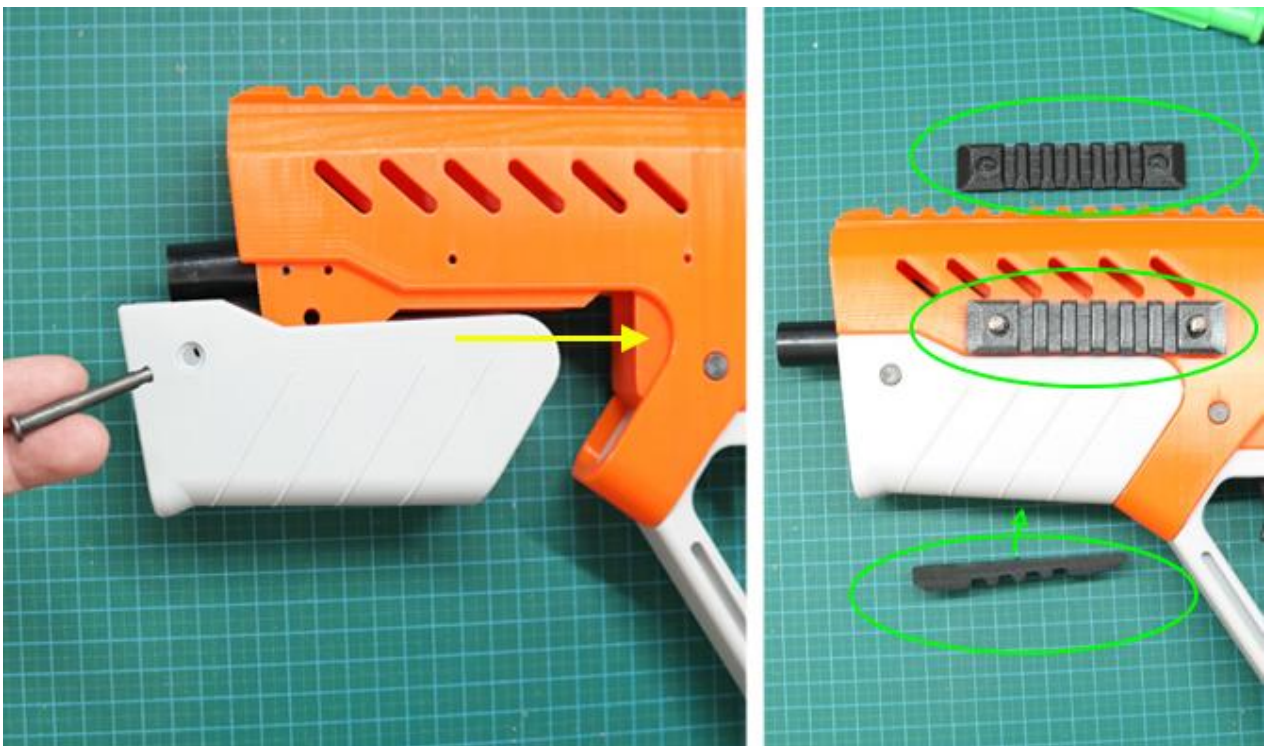


Step 26:

Install the barrel jacket to the grip module, slide from the front and push to the end fit with the top rail, be remind to match all the screws position.

**Step 27:**

Install the hand grip piece to the barrel jacket, slide from the front and fit into the cruve. Install the rail on the barrel jacket as shown, fasten all the screw to keep in position.



Step 29:

Fasten all the screws to secure the jacket in position. Insert the side rail piece for stryfe and muzzle to the barrel tube.

